

Alma is about the ties of community, family, friendships, and the women who share their strength with the people around them. Alexia was inspired by her mother's quiet fortitude and lifelong love of textiles and gardening. The colors in *Alma* are sunny and warm, but a calm deep blue adds depth to the range of hues. Alexia carved, stamped and painted to create this collection, giving her textiles a handmade quality.



Alexia's ever-popular basic *Add It Up* is back in a few familiar colors and lots of new ones. This subtle pattern both acts like a print and behaves like a solid - it truly goes with anything!

AUGUST DELIVERY

RS4001
30 prints
100% premium
Ruby Star Cotton



(JJR, JLC incl RS4001-4004 and RS4005-12M, -19, -27, -31; HY, FQ incl RS4001-4004 only [16 prints])

RS4005
14 prints
100% premium
Ruby Star Cotton



SUGGESTED MODA BELLA SOLID COORDINATES & COMPLEMENTS



RS4001-12



RS4001-22



RS4001-15



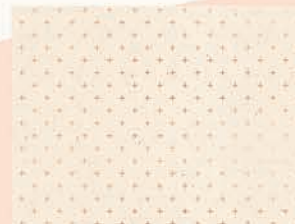
RS4002-16



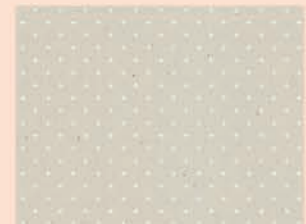
RS4001-18



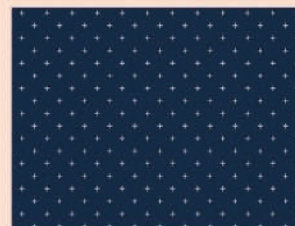
RS4002-14



RS4005-12M



RS4005-14



RS4005-27



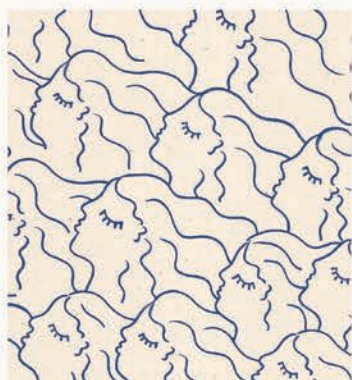
RS4005-29



ALEXIA MARCELLE ABEGG



RS4002-12



RS4003-16



RS4004-20



RS4003-18



RS4004-12M



RS4004-14



RS4004-18



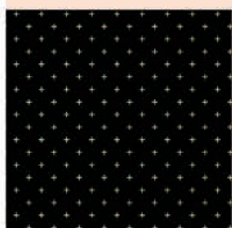
RS4003-14



RS4003-20



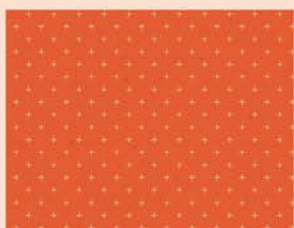
RS4004-16



RS4005-15M



RS4005-17



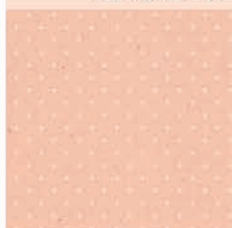
RS4005-19



RS4005-20



RS4005-23



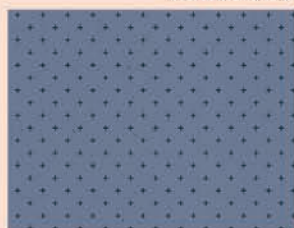
RS4005-31



RS4005-33



RS4005-35



RS4005-37



RS4005-39



GB 018 Green Bee Patterns - Boxcar Tote



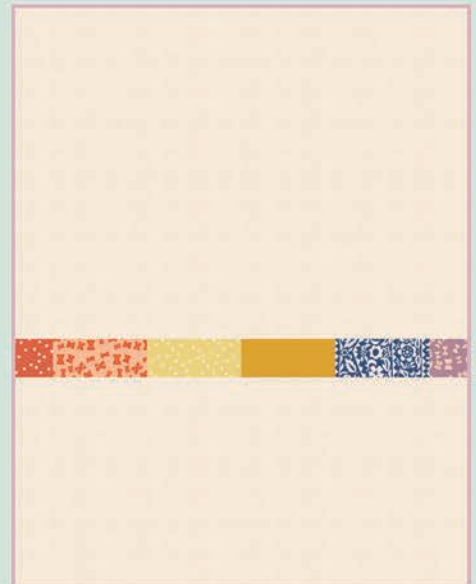
YC T63 Yesterdays Charm - Bandana Bibs



KIT

NO-CUT QUILT TOP!

(entire top is a custom precut)



includes pieced backing

RSS4001-KIT Alexia Marcelle Abegg - Swatch quilt kit

48" x 60"



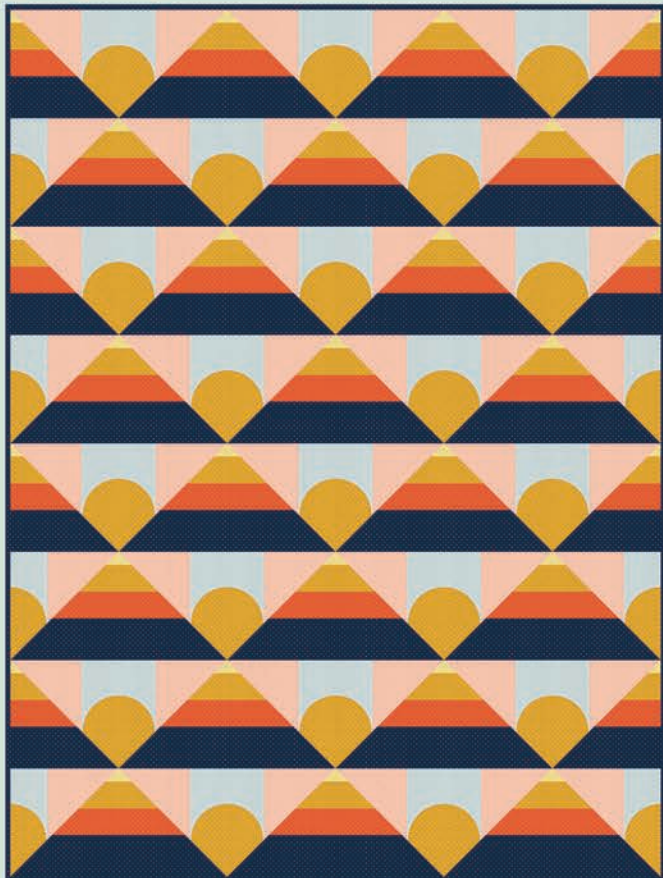
SPECIAL
EDITION
PATTERN

OAD 101 Olive Ann Designs - Gigi
(children's, back view shown)



IKS 1020 Initial K Studio - Vaquero quilt
(see pattern for additional colorways)

60½" x 70½"



LBS 7714 Lo & Behold Stitchery - Mountain Horizon quilt 51" x 68"



LC 023TD Liesl + Co - Terrace Dress (adult)