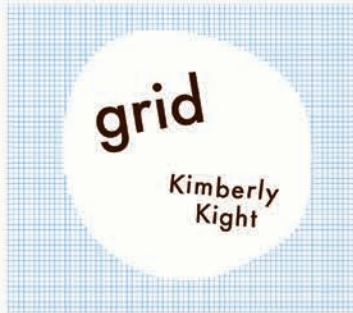




Anagram is a Memphis modern inspired collection. It's about mixing things up, finding new meaning and surprises, and trusting the creative journey to take you new places.



Kimberly's popular *Grid* basic is back in a whole new range of colors. The 1/4" squares are not only a perfect subtle blender, they also make a fun base for embroidery and sashiko projects.

JULY DELIVERY

RS3001
25 prints
100% premium
Ruby Star Cotton



(JJR, JLC do not include RS3005-12, -13, -14, -15, -22M)

SUGGESTED MODA BELLA SOLID COORDINATES & COMPLEMENTS

9900



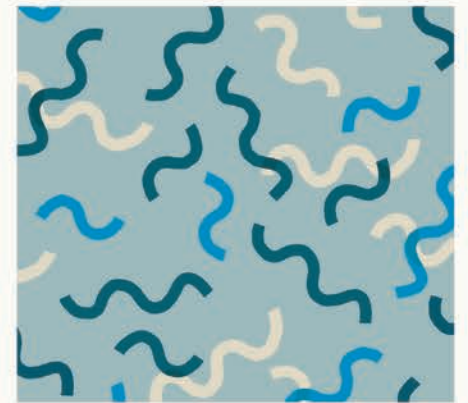
RS3001-11



RS3002-15



RS3001-15



RS3002-17



RS3001-20



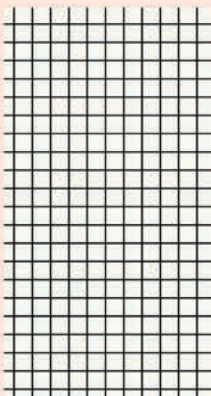
RS3002-19



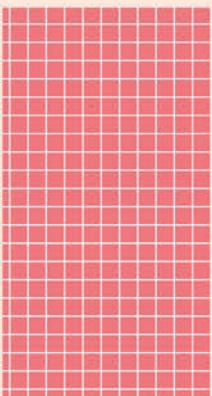
RS3005-11



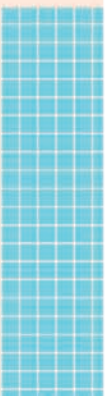
RS3005-12



RS3005-13

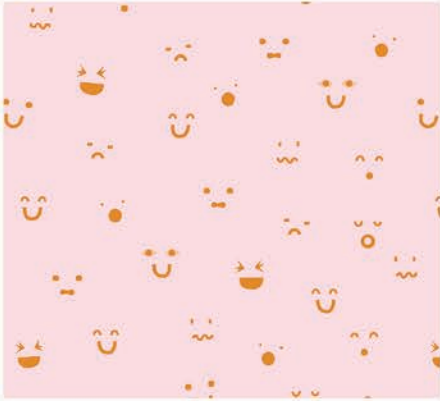


RS3005-14

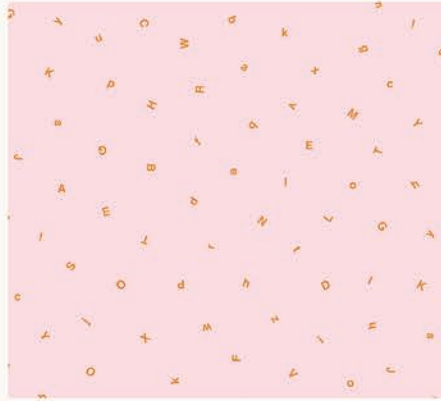


RS3005-15

KIMBERLY KIGHT



RS3003-17



RS3004-17



RS3003-12



RS3004-13



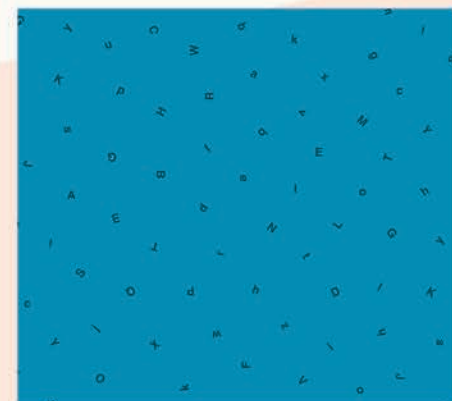
RS3004-18



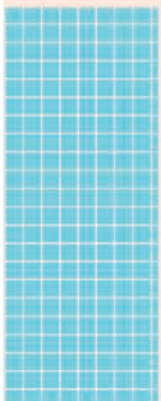
RS3002-11



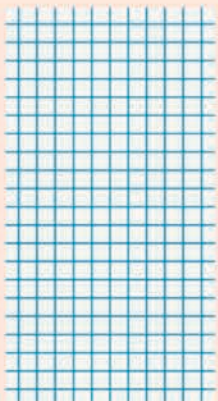
RS3003-19



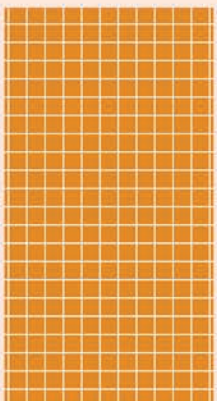
RS3004-20



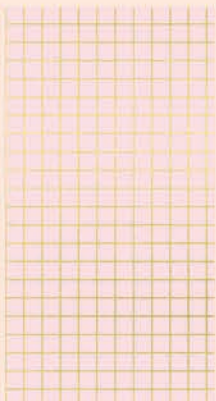
RS3005-15



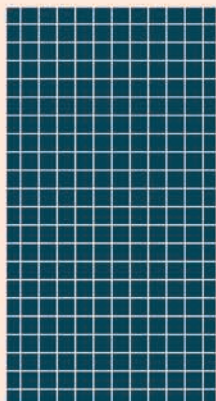
RS3005-16



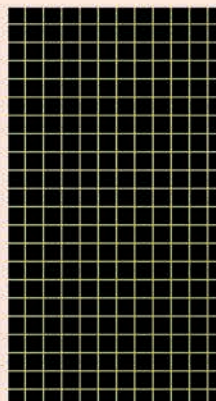
RS3005-17



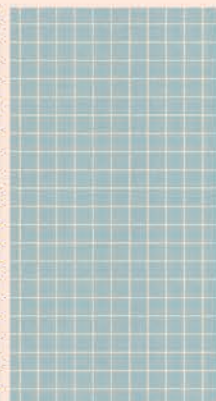
RS3005-18M



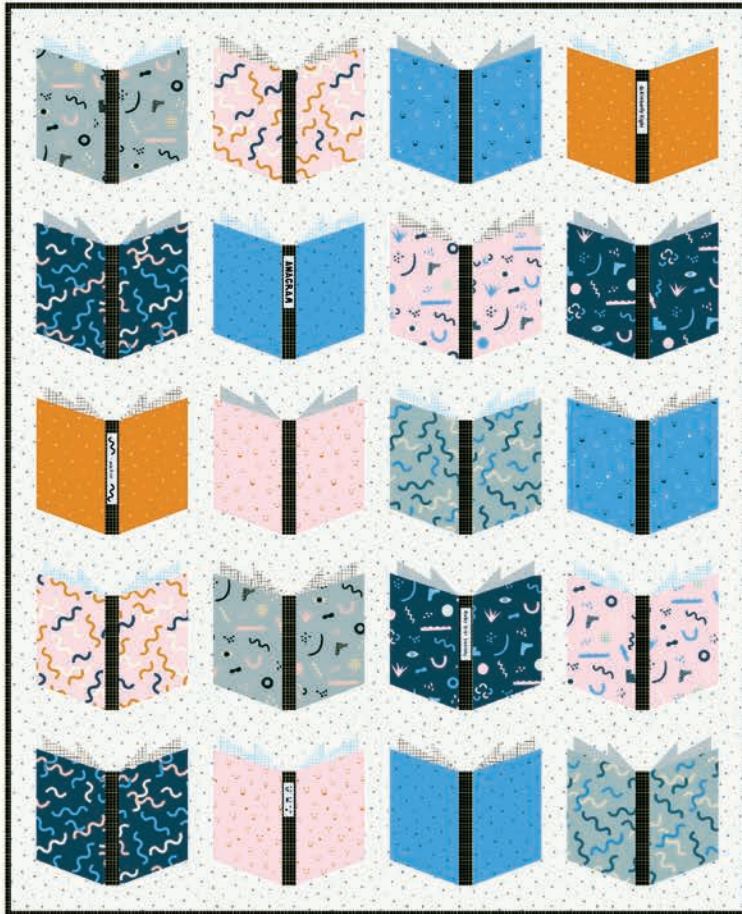
RS3005-20



RS3005-22M



RS3005-24

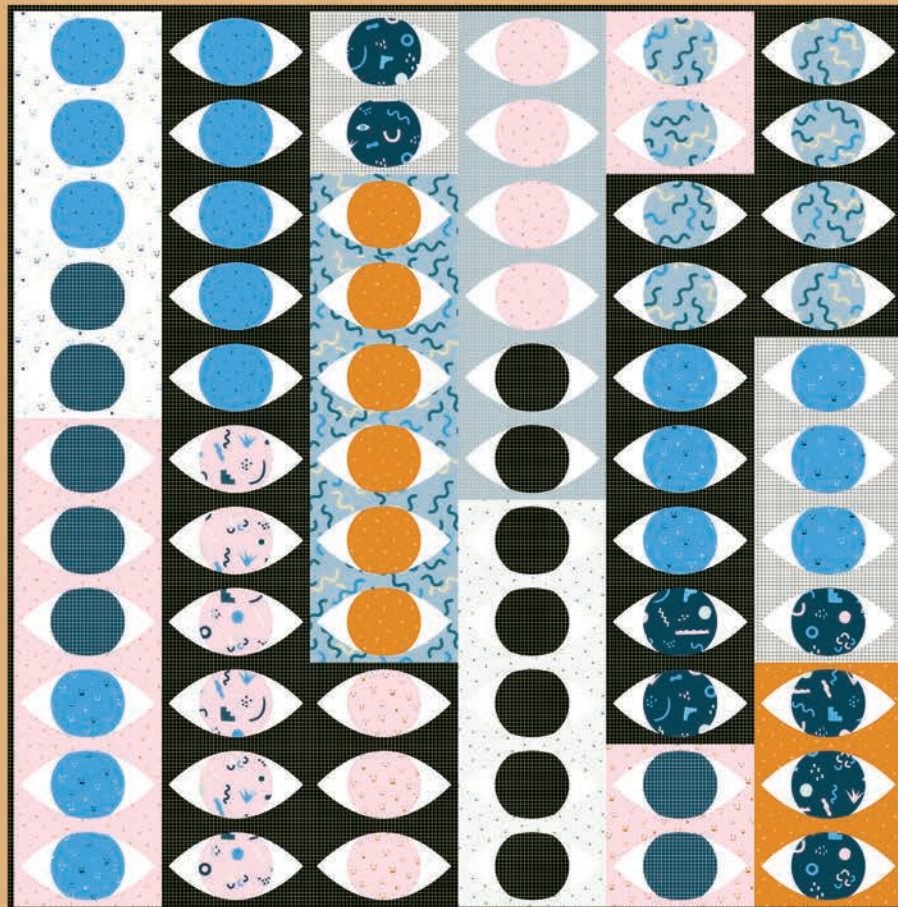


AP BN105 Angela Pingel - Book Nerd quilt

54" x 66"

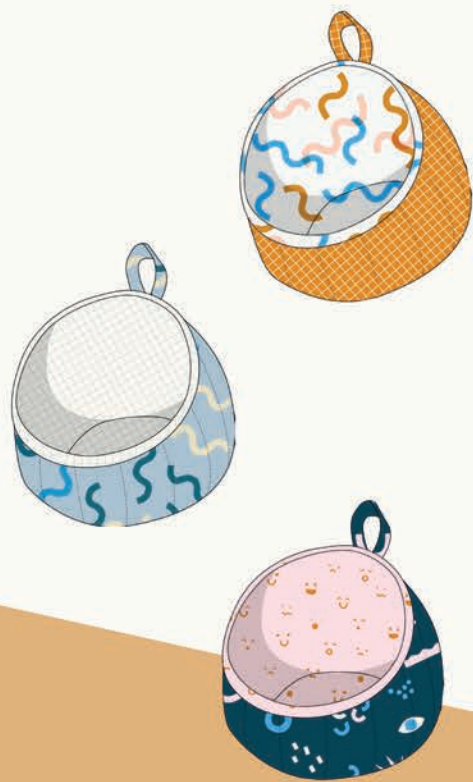


AG 533 Noodlehead - Poolside Tote



RSS P107 Ruby Star Society - Staring Contest quilt

60" x 60½"

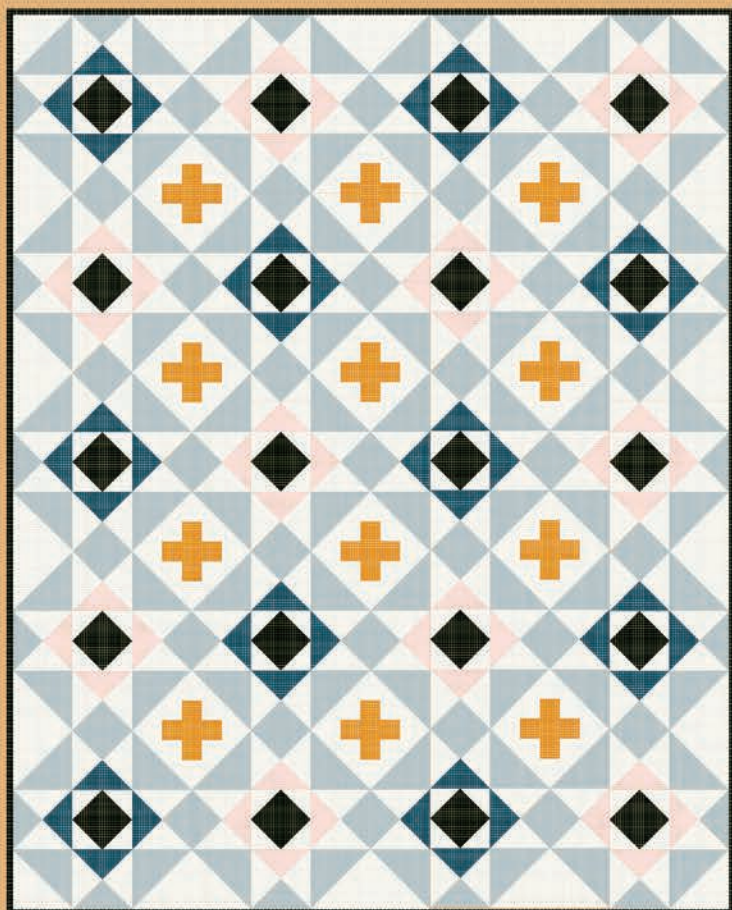


LFB 71 Beth Studley - Bubble Pods



KKSP001 Kimberly Kight - Memphis Time quilt

83" x 90½"



CCP 7606 Coral & Co. - Nordic Crossing quilt

48" x 60"



FTC S008 Fancy Tiger Crafts - Brome Dress / Shirt (adult)