



CATHE HOLDEN'S FleaMarketMoxie

OCTOBER DELIVERY

moda
FABRICS + SUPPLIES®



A sunny morning at the local flea market yields an eclectic compilation of fun and funky finds that inspire my new Flea Market Moxie fabric collection. Gum-wrapper chains to remind me of sweet childhood moments. Colorful needlepoints that stir warm, gramma vibes. A black & white photo of tourists watching with excitement. Vintage paint-by-number paintings never passed up but delightfully displayed. Pages of this and paragraphs of that, they're always an interesting read. Old cigar box labels with beautiful detail. And the rustic charm of old grape-gathering crates from the California Wine Country. An unexpected collection of unique designs to elevate your modern quilting, enhance eclectic decor, refresh your fashion, and put some punch in your projects!



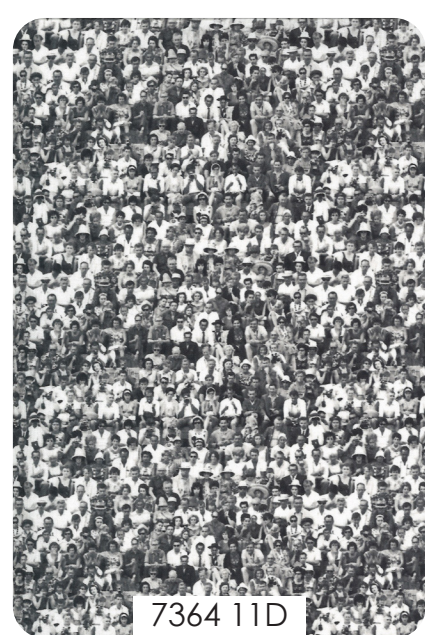
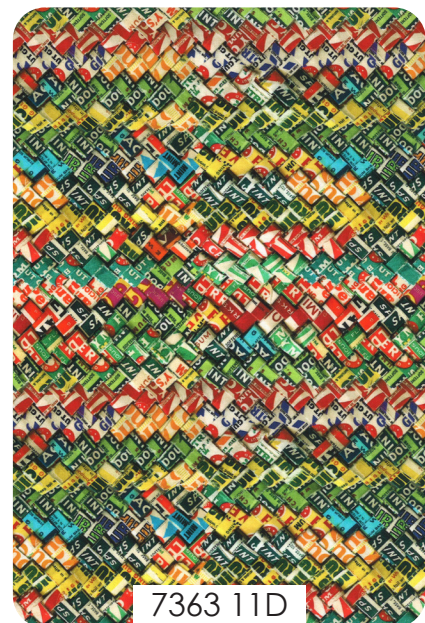


CATHE HOLDEN'S Flea Market Moxie

OCTOBER DELIVERY

moda
FABRICS + SUPPLIES®

7361 11D, 7363 11D and 7364 11D displayed at 30%



At the Post Office
Jack, and Tom wanted to
post office together. Tom
were called home for lunch.
of the boys were left to go
by 5 is 2. 2 from 3 is 1.
had 5. He bought a 2e
mail a letter. The letter
man in the same city. How
Jack have left from his 5e?
2 from 5. 2 from 5 is 3.
had a letter to send to
city. The stamp cost him 3e.
h did Billy have left from a
from 5 is 2.
ckel is how many cents more

Accuracy in the proportion of ingredients is absolutely necessary. To insure it, instead of depending on ordinary cups and spoons, no two of which hold exactly the same quantity, it is well to have utensils of regulation size—a measuring cup divided into quarters and thirds, and holding half a pint, a few tea- and tablespoon, a case knife, and several mixing spoons.
For the sake of convenience cakes may be divided into two classes. In the main, one method of mixing for cakes of one class is followed.
To mix sponge cake: Separate the yolks of the eggs from the whites, and beat the yolks with an egg-beater until they are thick and creamy. Then add the sugar a little at a time, beating constantly. Now beat the whites until they are stiff and dry, add them and the sifted dry ingredients as directed in the recipe. Do this with as few motions as possible, as otherwise the air bubbles enclosed in the mixture will be broken and all previous work undone.
To mix butter cake: Use an earthen bowl for mixing such cakes, and a wooden mixing spoon with slots in it, to lighten the labor of creaming and stirring. Measure the dry ingredients, mix with the flour and sift. Next break the eggs, dropping each into a saucer first in case the whole egg is to be used, so that if a stale egg happens to be among them it can be detected easily and in time. If the whites and yolks are to be used separately, divide them as you break the eggs, and beat both well before using—the yolks until light and the whites until stiff and dry.

7361 11D
7363 11D
7364 11D

7361 11D, 7363 11D and 7364 11D displayed at 30%

7361 11D, 7363 11D and 7364 11D displayed at 30%

7361 11D, 7363 11D and 7364 11D displayed at 30%



7362 11D

7362 11D reduced to show Full WOF. Largest label is approx 8" x 5". Smallest label is approx. 6" x 2.25"



7360 11D



7365 11D



7365 13D



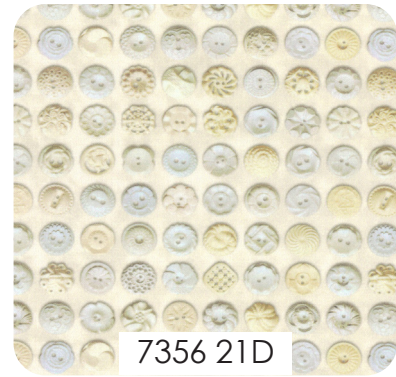
7365 12D



7355 11D



7354 11D



7356 21D



7356 11D



7357 11D



7355 14D



7357 14D



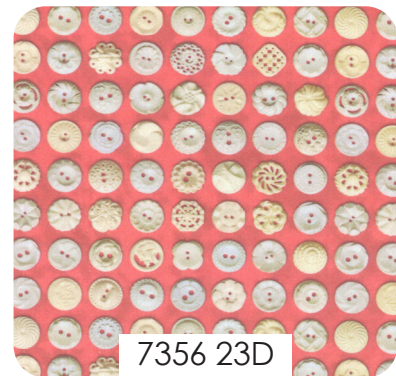
7357 12D



7354 13D



7357 13D



7356 23D



7350 11D



7352 13D



7351 12D



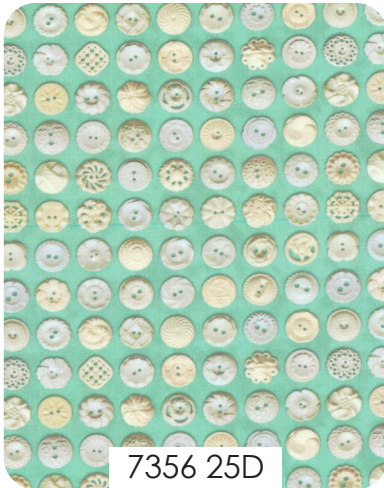
7356 15D



7354 15D



7355 15D



7356 25D



7357 15D

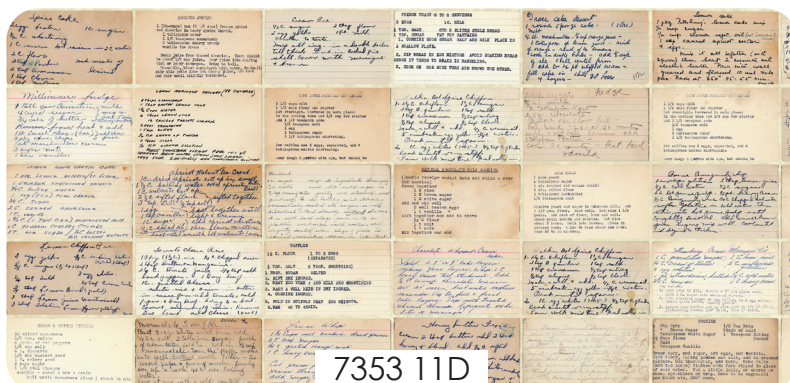


7354 17D

7350 15D displayed at 50% to show full width of fabric



7350 15D

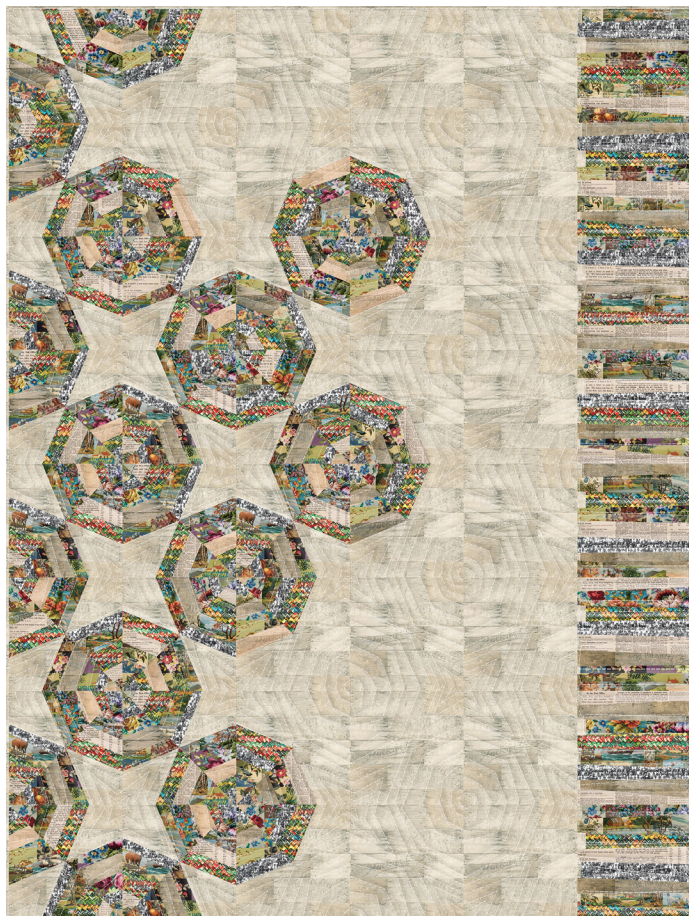


7353 11D



7352 12D

All skus reduced to 35% except 7350 15D, which is 50% to show full WOF.
7352 12D labels are approx 4.75" x 2.75".



Front

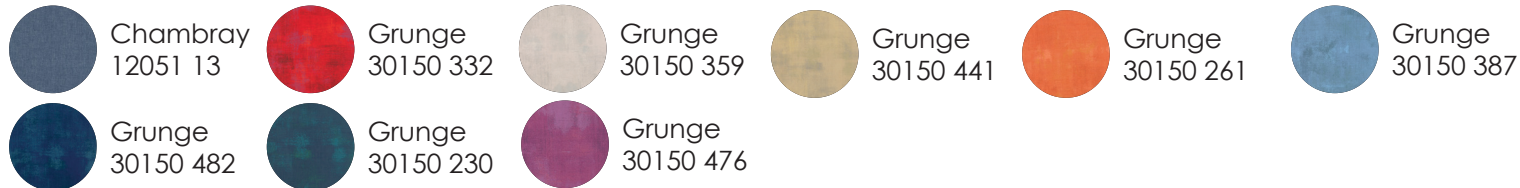


Back

CH 01 - Hunt & Gather 60" x 80"

to view Cathe Holden's video, [click here](#).

Basics Coordinates



FLEA MARKET MOXIE

7360 **Asst. 15D** **Asst. 10D** **HYD**

• 9 Prints • 100% Premium Cotton

OCTOBER DELIVERY

FLEA MARKET MIX

7350 **Asst. 15** **Asst. 8** **AB** **JR** **LC** **PP**

• 23 Prints • 100% Premium Cotton

JR's, LC's & PP's do not include 7350 & 7352. JR's, LC's & PP's include two of each sku plus three of 7351 & 7353.

MAY DELIVERY