

Liana

Kimberly Kight

A liana is a vine-like plant that grows up through trees to reach the light of the forest canopy. To create her collection Liana, Kimberly Kight took a viney vintage jungle print and mixed in a pan-animal fur print from a vintage Ken doll outfit, a sweet little calico, and a vintage snail friend.

MARCH DELIVERY

16 premium 100% Ruby Star Cotton prints

RS3009

Asst.
15

Asst.
10

HY

FQ

JJR

JLC

PP

grid

Kimberly Kight

These four new colors of Kim's basic Grid perfectly coordinate with Liana.

LIANA | SADDLE



RS3009-11

LIANA | PERIWINKLE



RS3009-12

LIANA | BLACK



RS3009-13

SNAILEY | COPPER



RS3011-11M

SNAILEY | DOVE



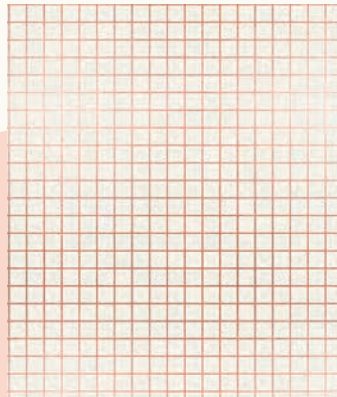
RS3011-19

SNAILEY | BLACK



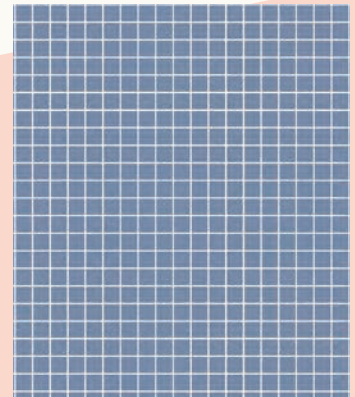
RS3011-27

GRID | COPPER



RS3005-31M

GRID | DENIM



RS3005-34

GRID | BLACK



RS3005-37

BLACK



9-14

MYSTERY FUR | SADDLE



RS3010-13

MYSTERY FUR | BLACK



RS3010-15

MYSTERY FUR | KISS



RS3010-16

BLACK



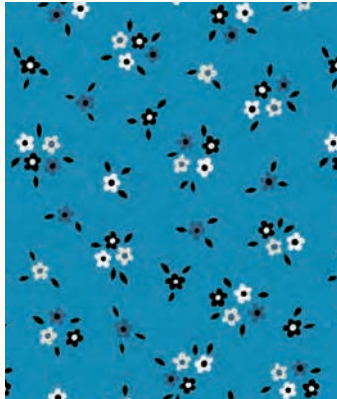
20M

CALICO | COPPER



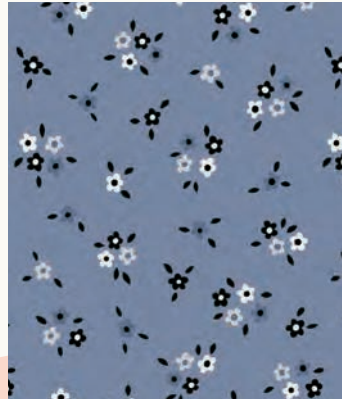
RS3012-11M

CALICO | BRIGHT BLUE



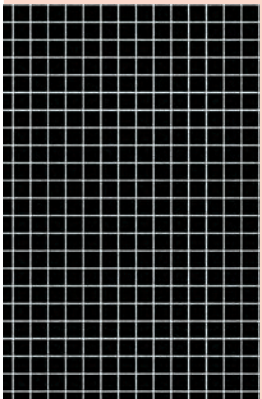
RS3012-14

CALICO | DENIM



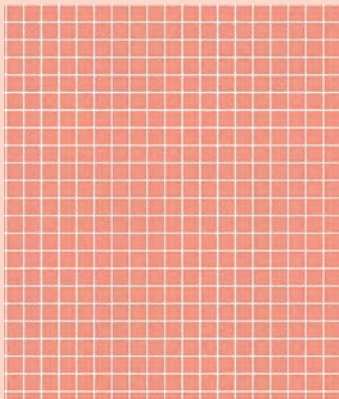
RS3012-16

ANTHER



5-35

GRID | PAPAYA

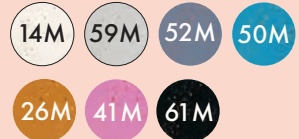


RS3005-36



SUGGESTED SPECKLED COORDINATES & COMPLEMENTS

RS5027



SUGGESTED MODA BELLA SOLID COORDINATES & COMPLEMENTS

9900

