



Camellia sinensis is the plant responsible for most of the tea we drink. In this collection, Melody Miller was inspired by the idea of a 1960's tea room, layered in an assortment of prints and patterns - wallpaper, upholstery, women in kaftans, flowering plants and china dishes. Melody has added five new colors to her Spark basic to support Camellia, and also designed three canvas prints to coordinate.



DECEMBER 2021 DELIVERY

29 premium 100% Ruby Star Cotton prints
3 Cotton Linen Canvas prints (70% cotton / 30% linen)

RS0029

Asst.
15

Asst.
10

HY

FQ

JR

LC

PP

KIT

Assortments and precuts include new Spark colors. Assortments and precuts do not include canvas.

SUGGESTED SPECKLED COORDINATES & COMPLEMENTS

RS5027

90

97M

67M

26M

107M

72M

58M

SUGGESTED SPARK COORDINATES & COMPLEMENTS

RS0005

26

28

23

15

36M

39

17

SUGGESTED MODA BELLA SOLID COORDINATES & COMPLEMENTS

9900

200

27

292

291

225

109

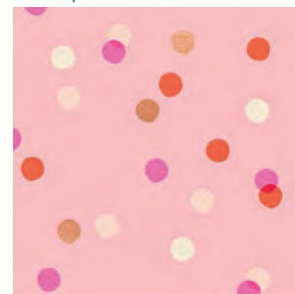
14

SPRITZ | PARCHMENT



RS0010-31M

SPRITZ | BALMY



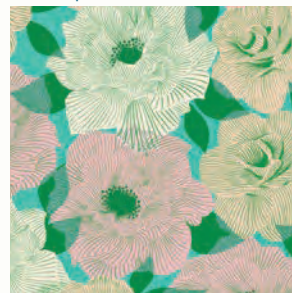
RS0010-32M

SPRITZ |



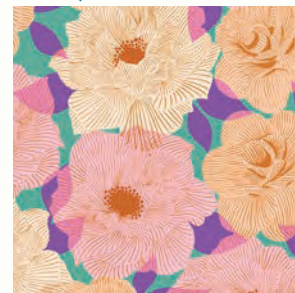
RS0010-33M

PARLOR | TROPIC



RS0030-13

PARLOR | WATERCRESS



RS0030-14

HIBISCUS



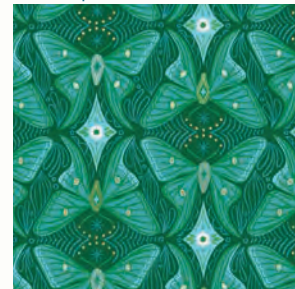
RS0030-15

REGALIA | CARAMEL



RS0032-13M

REGALIA | JADE



RS0032-16M

STIRRING



RS0032-17M

MACRAME | CARAMEL



RS0034-14

MACRAME | TURQUOISE



RS0034-16

MACRAME



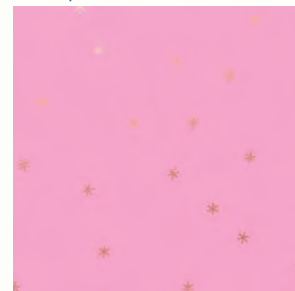
RS0034-17

SPARK | BUTTERCREAM



RS0005-54

SPARK | FLAMINGO



RS0005-55M

SPARK |



RS0005-56M

RITZ | TROPIC



S0010-34M

TEA CUPS | FLAMINGO



RS0029-11

TEA CUPS | CARAMEL



RS0029-13

TEA CUPS | TURQUOISE



RS0029-16

PARLOR | BALMY



RS0030-12

BISCUS | BALMY



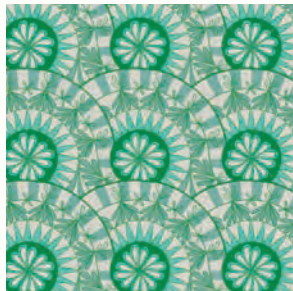
S0031-11

HIBISCUS | BANANAS



RS0031-12

HIBISCUS | WATERCRESS



RS0031-15

REGALIA | LIPSTICK



RS0032-11M

REGALIA | FLAMINGO



RS0032-12M

IRRING | FLAMINGO



S0033-11

STIRRING | CARAMEL



RS0033-13

STIRRING | TURQUOISE



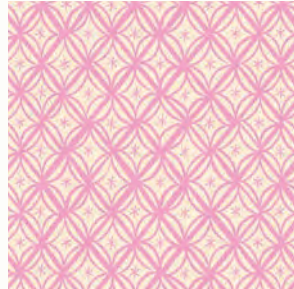
RS0033-14

MACRAME | BUTTERCREAM



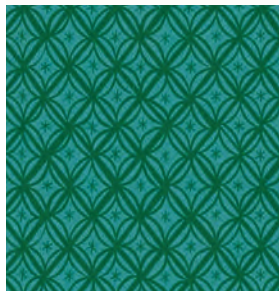
RS0034-11

MACRAME | FLAMINGO



RS0034-12

MACRAME | SUCCULENT



S0034-17

CHAMOMILE | CARAMEL



RS0035-11LM

CHAMOMILE | POLAR



RS0035-14LM

CHAMOMILE | PEACOCK



RS0035-15LM

ARK | BALMY



S0005-56

SPARK | CARAMEL



RS0005-57M

SPARK | TROPIC



RS0005-59M



get to know
MELODY MILLER



What are some tips for balancing creativity for work and fun? Set boundaries for your job so that you have some energy left for the fun stuff! I have felt far more creative in my free time since I've been adhering to a strict policy of doing my job during office hours only. I'm very engaged in my job when I'm in the studio, and I don't take it home with me. This has given me the most creative energy for both my work and my personal projects. What are some of your hobbies outside of sewing? This past year I've been learning animation and I'm pretty obsessed. There are so many ways to do it, and it's repetitive and tedious in a way that I find both engaging and soothing. Also, by the time this catalog is printed I will have gone to stunt driving school, something that has been on my bucket list for as long as I can remember! What fan club would you be president of? The Peanut Butter Fan Club!