

Fire Glow

BY SARAH WATTS

In Fire Glow, Sarah Watts invites you into a storybook realm, where the air shimmers with enchantment, tendrils of smoke curl and dance, and dragons soar among the stars. Inspired by beautiful tapestries, the scrollwork of enamel tiles, and a blend of fantasy and folklore, Sarah weaves it all together through her singular, magical lens.



If you can't tell, I am a big fan of dragons.

From books to blockbuster shows and movies, fantasy is THRIVING. Dragons are one of the most popular and widely known fantasy creatures. I am getting a tattoo from this collection.



Dragons lend themselves to cosplay, costume-making, and bold DIY garments with mythic flair. There are massive conventions dedicated to fantasy topics, like Dragon-Con, Megacon, Comic-Con, and more.

I've been to some of these shows, and people come dressed and layered in their favorite fantasy-themed goods.

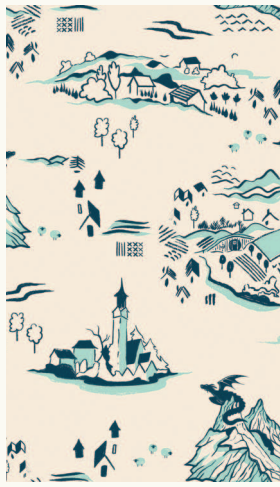


Quilters can have a lot of fun with dragon and fantasy fabric—think quilts with fiery, magical themes or whimsical kids' clothes that spark the imagination. You could also use it for home décor like throw pillows or wall hangings that bring a bit of mythical flair to a room.





RS2137 11M
SCRIBE | SHELL



RS2133 12
MOUNTAIN TOWN | FROST



RS2133 11M
MOUNTAIN TOWN | POINSETTIA



RS2132 11M
DRAGON LAIR | OYSTER



RS2135 11
SMOKE | OYSTER



RS2131 11M
ETCHED DRAGONS | POINSETTIA



RS2132 12M
DRAGON LAIR | POINSETTIA



RS2138 11LM
DRAGON LAIR CANVAS | POINSETTIA



RS2132 13M
DRAGON LAIR | WATERCRESS



RS2131 13M
ETCHED DRAGONS | MINT



RS2137 13M
SCRIBE | WATERCRESS



RS2135 15
SMOKE | WATERCRESS



RS2136 14M
EMBLEM | GALAXY

FireGlow
BY SARAH WATTS

APRIL 2026 DELIVERY

23 premium 100% Ruby Star Cotton prints
3 Cotton/Linen Canvas Prints (70% cotton, 30% linen)

ASSORTMENTS & PRECUTS

ASSTRS2131

15

10

RS2131

FQ

JR

LC

MC

PP

SASSTRS2131 15 includes 15 yds of each basic coordinate!

ALL PRINTS SHOWN AT 30% SCALE

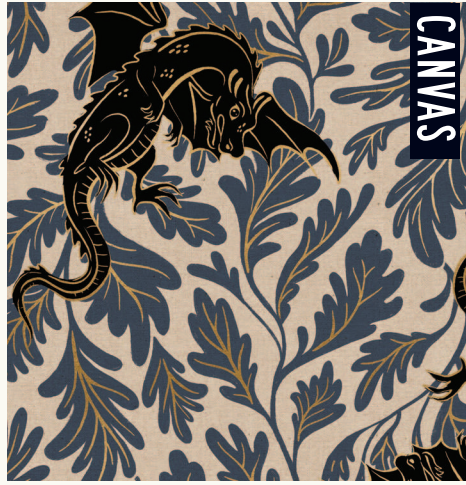
COORDINATES & COMPLEMENTS



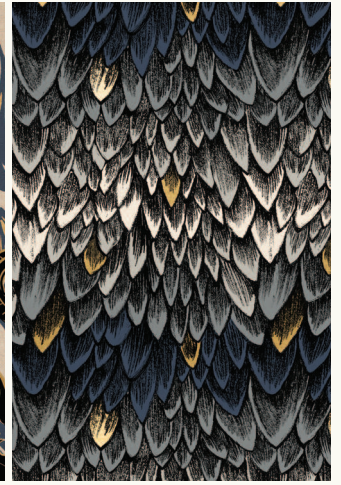
RS2133 13M
MOUNTAIN TOWN | OYSTER



RS2136 13M
EMBLEM | OYSTER



RS2138 16LM
DRAGON LAIR CANVAS | SMOKE



RS2134 14M
SCALES | SMOKE



RS2136 12M
EMBLEM | POINSETTIA



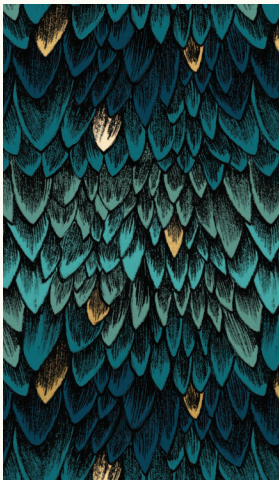
RS2137 12M
SCRIBE | POINSETTIA



RS2135 14
SMOKE | ROSE



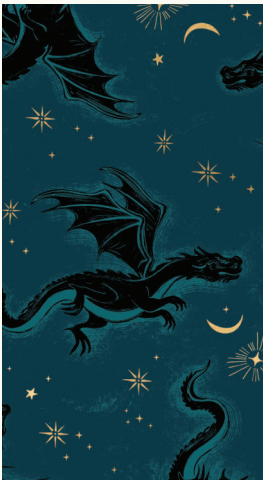
RS2134 11M
SCALES | ROSE



RS2134 13M
SCALES | GALAXY



RS2138 17LM
DRAGON LAIR CANVAS | GALAXY



RS2131 14M
ETCHED DRAGONS | GALAXY



RS2137 15M
SCRIBE | BLACK



RS2135 16
SMOKE | BLACK



SHELL RS5027 82M



SUCCULENT RS5027 107M



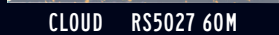
SORBET RS5027 92M



BERRY RS5027 62M



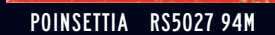
SUEDE RS5027 132M



CLOUD RS5027 60M



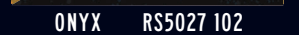
POLAR RS5027 101M



POINSETTIA RS5027 94M



PURPLE VELVET RS5027 73M



ONYX RS5027 102

AG 540
Noodlehead
Range Backpack

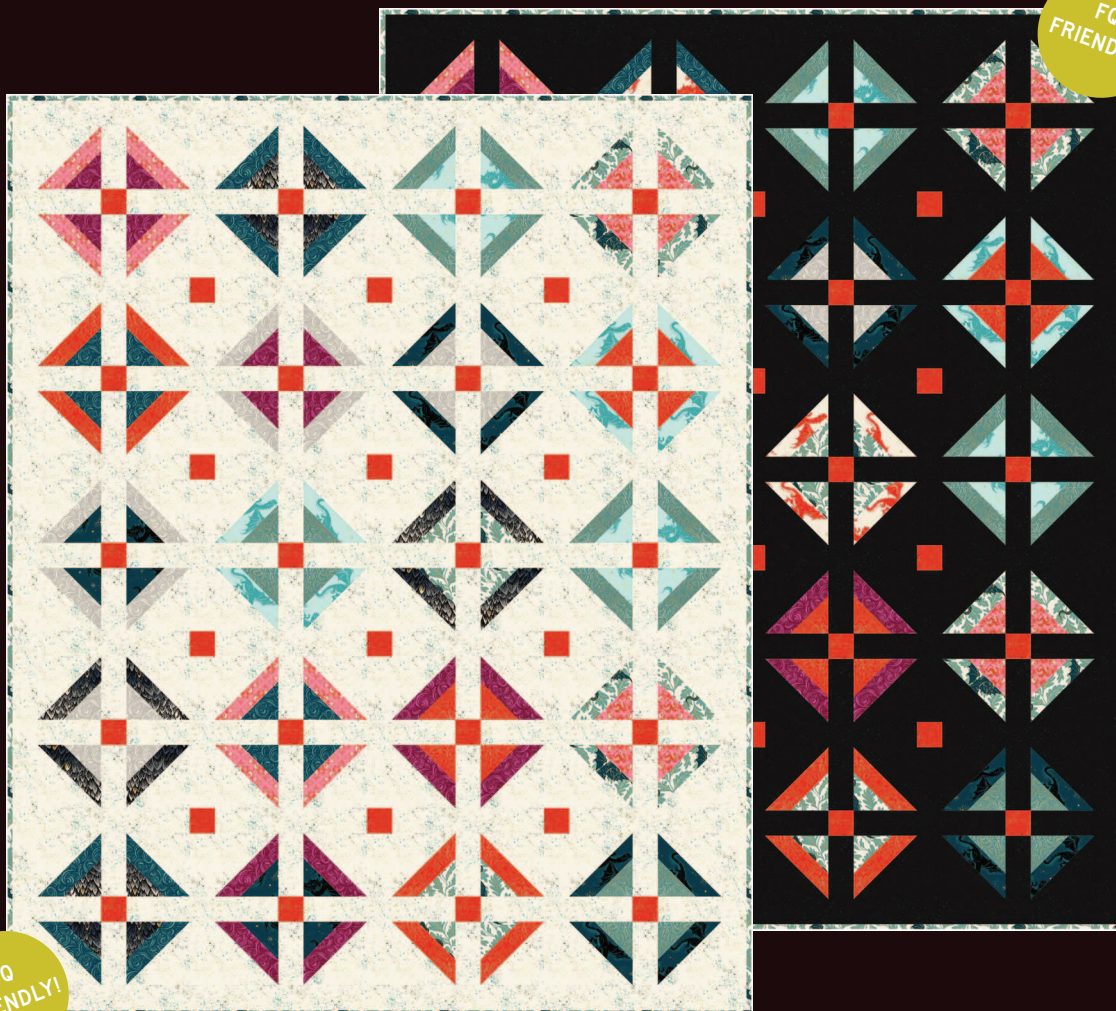


*the Dragon Lair canvas
makes fantastic bags!*



CJ 135
Cotton and Joy
Phoenix Backpack

FQ
FRIENDLY!



FQ
FRIENDLY!

MMD 1123 Meadow Mist Designs | Hartwell

58" x 72"

FQ
FRIENDLY!



TBS-025 The Blanket Statement | Crystal Creek Quilt 72" x 72"



KTQ 193 Kitchen Table Quilting | The Blythe Quilt 64" x 76"



X0 125 XOXSEW | Liminal Space

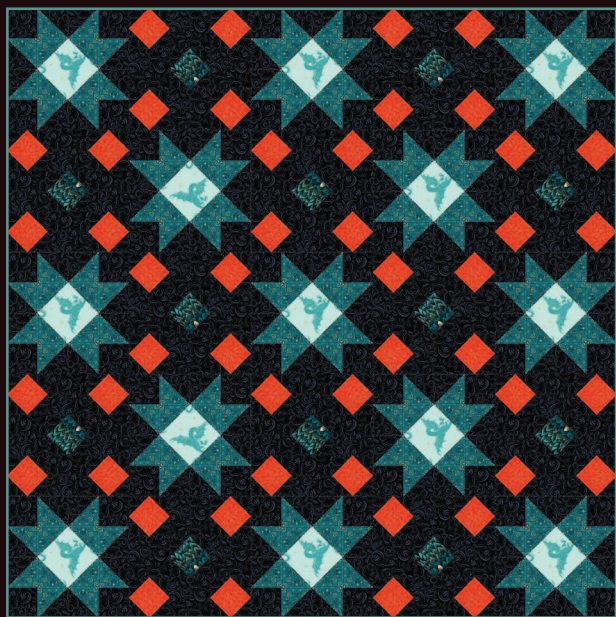
66" x 66"



AP BN105 RSS

Angela Pingel
Book Nerd

54" x 66"



SS 06 String & Story | Sirius

60" x 60"



TBS-024 The Blanket Statement | Falcon Ridge Quilt 68" x 72"

