

*our newest guest designer*

# CAROLYN FRIEDLANDER



Carolyn Friedlander is an artist specializing in modern fabric designs, quilting and sewing patterns, and quilt making with intention.

Carolyn grew up on a cattle and citrus ranch in Lake Wales, Florida, where she spent most of her free time immersed in drawing, painting, and sewing. She earned a B.A. in Architecture from Washington University in St. Louis. After a stint in architecture, Carolyn sought a different occupation that would allow her to be wildly creative and work with her hands. Though she had long known how to sew, she quickly recognized quilting as a new passion and set out to learn everything she could about the craft. She was drawn to bright and bold fabrics and saw a need for clean, modern patterns. In 2010, she founded her business, Carolyn Friedlander LLC.

Today Carolyn is an active presence, partnering with industry leaders to reach quilters worldwide. In addition to her full line of quilt patterns, her book, *Savor Each Stitch: Studio Quilting With Mindful Design*, was published in 2014.

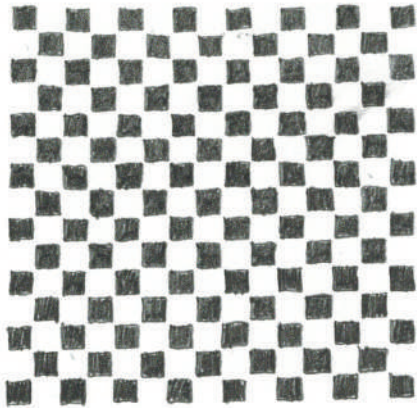
## *from Carolyn*

I'm inspired by colors that make me happy, shapes that I find interesting and fabrics that can move in many different creative directions.

As a quilter, I love to design hard-working prints that can be mixed and matched in all kinds of ways. Throughout the development of a collection, I'm moving pieces around constantly to see how they can work together. My favorite pieces are those that can perform many roles in a project—from being able to support something else, to being the star player.







## MEMENTO

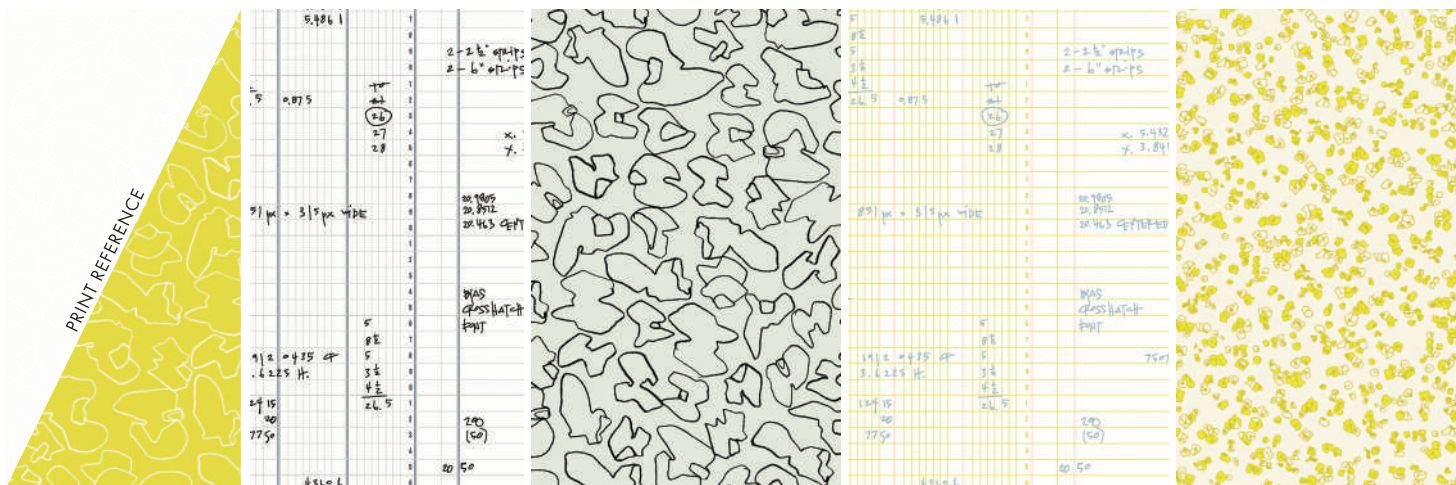
carolyn friedlander

Memento is a special collection that has been percolating in my mind for a while as I took some time away from designing fabric. It celebrates many reminders and keepsakes during this time.

It's a collection about hope. It's about finding your creative energy, connecting with and seeing your own light. The shapes and motifs are derived from cherished shapes I encounter everyday as well as things that remind me of the love of others and trying something new. Memento includes some familiar favorites as well. I'm excited about the full range of color, the variety of shapes and the personal hand in each of the prints. I see this collection serving a range of quilt projects, and I am especially excited to have some prints on canvas to expand the possibilities as well.







**RS8005 11\***  
WALNUTS | CREAM SODA

**RS8003 11\***  
LEDGER | CREAM SODA

**RS8005 12**  
WALNUTS | COTTON

**RS8003 12**  
LEDGER | CITRON

**RS8004 13**  
GRIT | CITRON

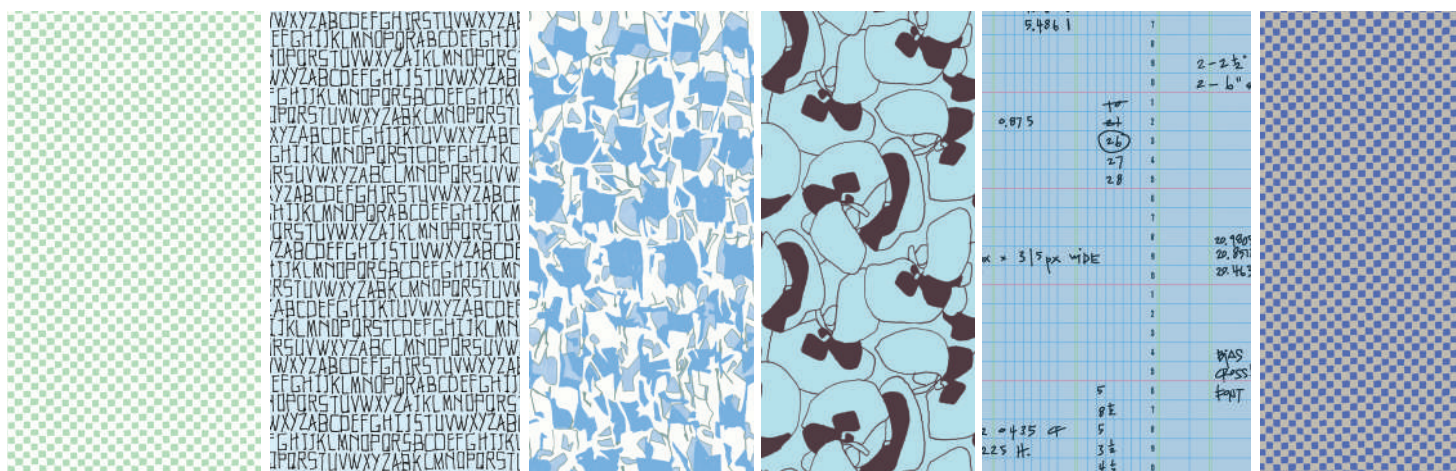


**RS8006 14\***  
TRACKS | PUMPKIN

**RS8000 14\***  
SEAGRAPES | ORANGE

**RS8002 17\***  
ALPHABET | FLORIDA

**RS8004 17\***  
GRIT | SMORES



**RS8006 13**  
TRACKS | MIST

**RS8002 13**  
ALPHABET | ETHEREAL

**RS8001 13\***  
EXPLORE | ALTITUDE

**RS8000 13\***  
SEAGRAPES | POLAR

**RS8003 17\***  
LEDGER | WATER BLUE

**RS8006 17\***  
TRACKS | ROYAL BLUE



**JULY 2026 DELIVERY** (neon prints denoted with •)

28 premium 100% Ruby Star Cotton prints  
5 Cotton/Linen Canvas Prints (70% cotton, 30% linen)

### ASSORTMENTS & PRECUTS

Select assortment available ASSTRS8000-10H  
(10 yds of 20 skus with \*)

ASSTRS8000

15

10

10H

RS8000

FQ

JR

LC

MC

PP

SASSTRS8000 15 includes 15 yds of each basic coordinate!

ALL PRINTS SHOWN AT 30% SCALE

**COORDINATES & COMPLEMENTS**





**RS8000 11\***  
SEAGRAPES | NEON YELLOW



**RS8001 12\***  
EXPLORE | CITRON



**RS8005 13\***  
WALNUTS | CITRON



**RS8001 16**  
EXPLORE | BLACK



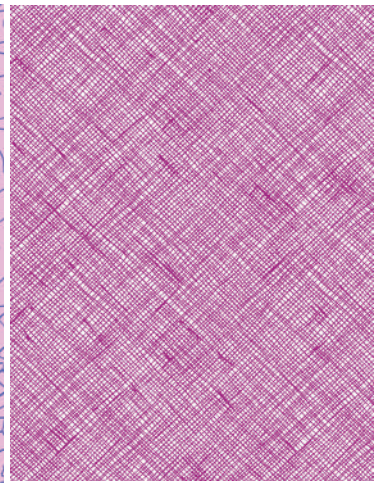
**RS8007 13\***  
CROSSHATCH | LAVENDER



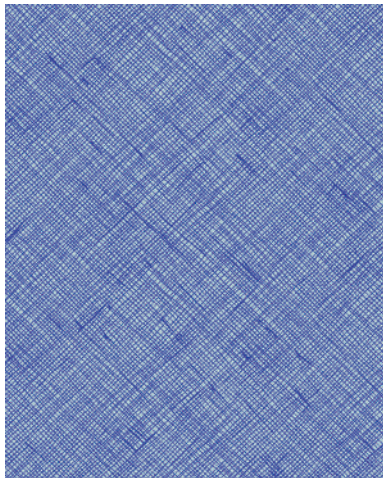
**RS8001 14\***  
EXPLORE | PALE PEACH



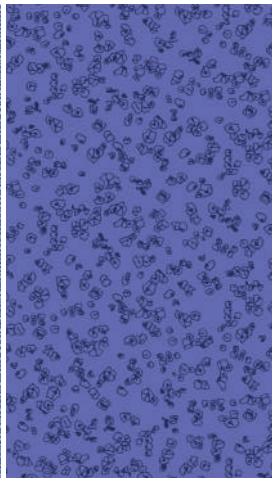
**RS8005 14\***  
WALNUTS | MACARON



**RS8007 15**  
CROSSHATCH | CHESHIRE



**RS8007 16**  
CROSSHATCH | LAPIS



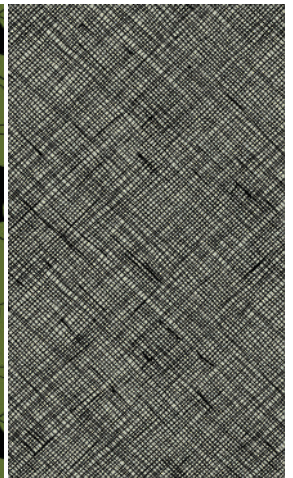
**RS8004 16\***  
GRIT | LAPIS



**RS8002 18\***  
ALPHABET | PRUSSIAN



**RS8000 16\***  
SEAGRAPES | SARAH GREEN



**RS8007 17\***  
CROSSHATCH | BLACK



**CREME BRULEE RS5027 136**



**LINDLEY BLUE RS5027 127M**



**TEAL NAVY RS5027 55M**

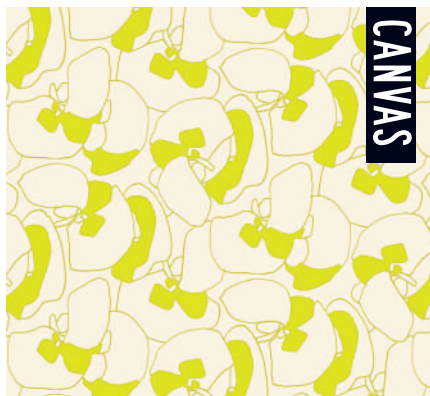


**CITRON RS5027 65M**

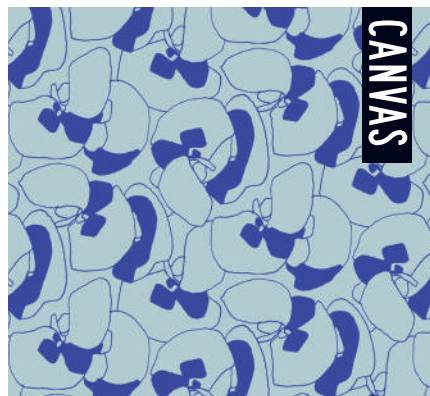


**GOLDFISH RS5027 120**





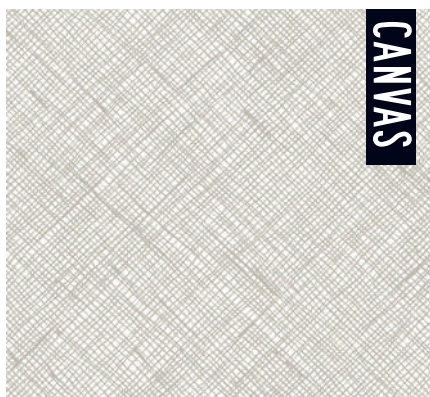
**RS8008 12L•**  
SEAGRAPES CANVAS | NEON YELLOW



**RS8008 20L**  
SEAGRAPES CANVAS | POLAR



**RS8008 21L**  
SEAGRAPES CANVAS | ORANGE



**RS8009 11L**  
CROSSHATCH CANVAS | COTTON



**RS8009 17L**  
CROSSHATCH CANVAS | BLACK

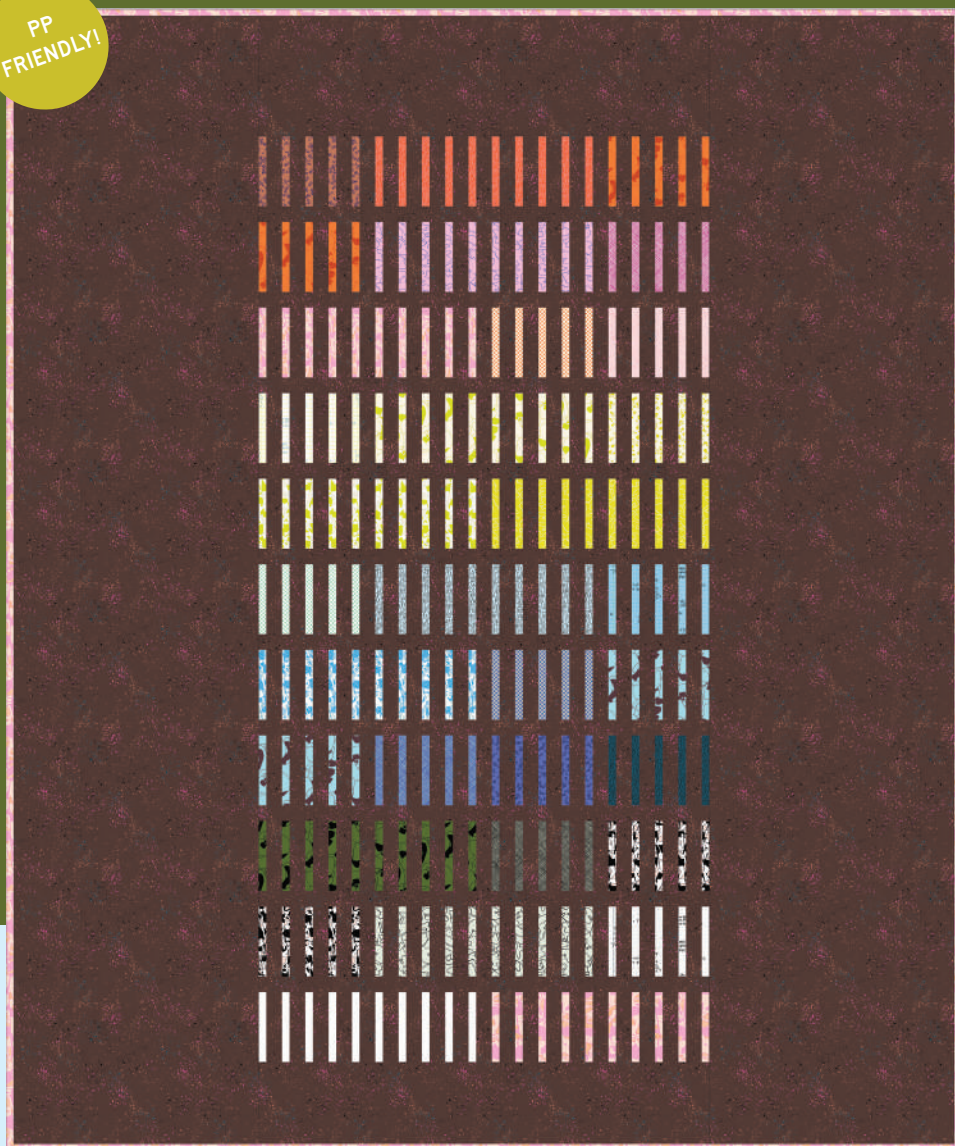


**JULY 2026 DELIVERY**

5 Cotton/Linen Canvas Prints (70% cotton, 30% linen)  
(neon prints denoted with •)



PP  
FRIENDLY!



CF 001

Carolyn Friedlander  
Bartow Quilt

60½" x 72½"

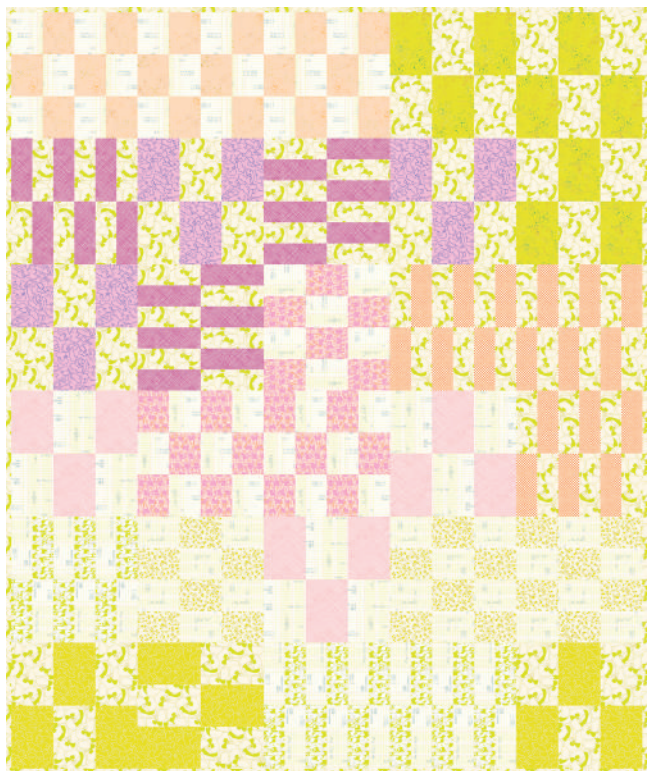
PP  
FRIENDLY!

CF 1414

Carolyn Friedlander  
Hearts Quilt  
40" x 40"



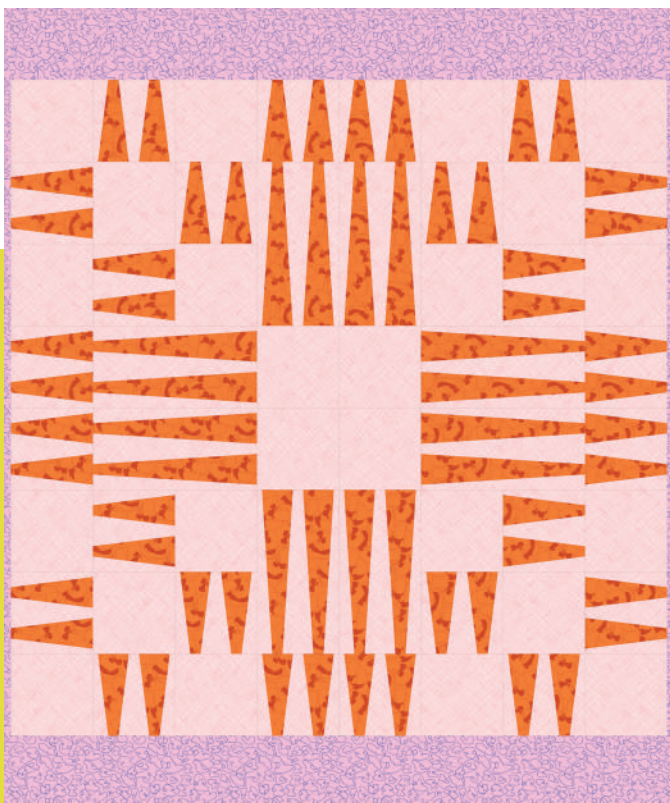




CF 1132 Carolyn Frielander | Elate Quilt 72" x 84"



CF 1122 Carolyn Friedlander | Russell Quilt 71½" x 80½"

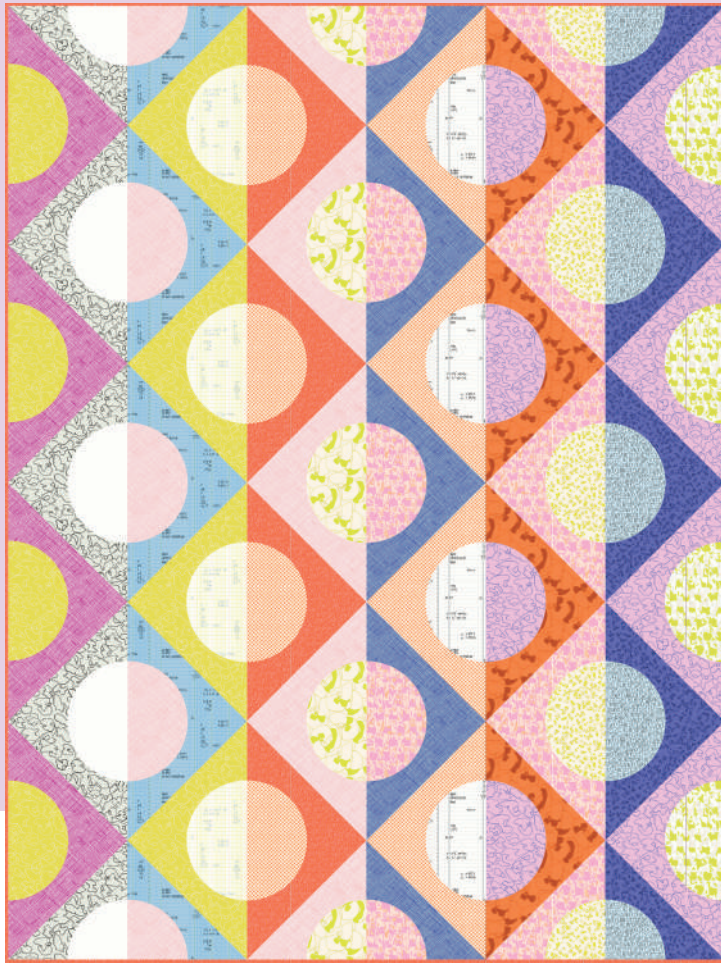


CF 1131 Carolyn Friedlander | Slash Quilt 48" x 57"



CF 1706 Carolyn Friedlander | Dote Charm 32½" x 40"





**SRQ 014**

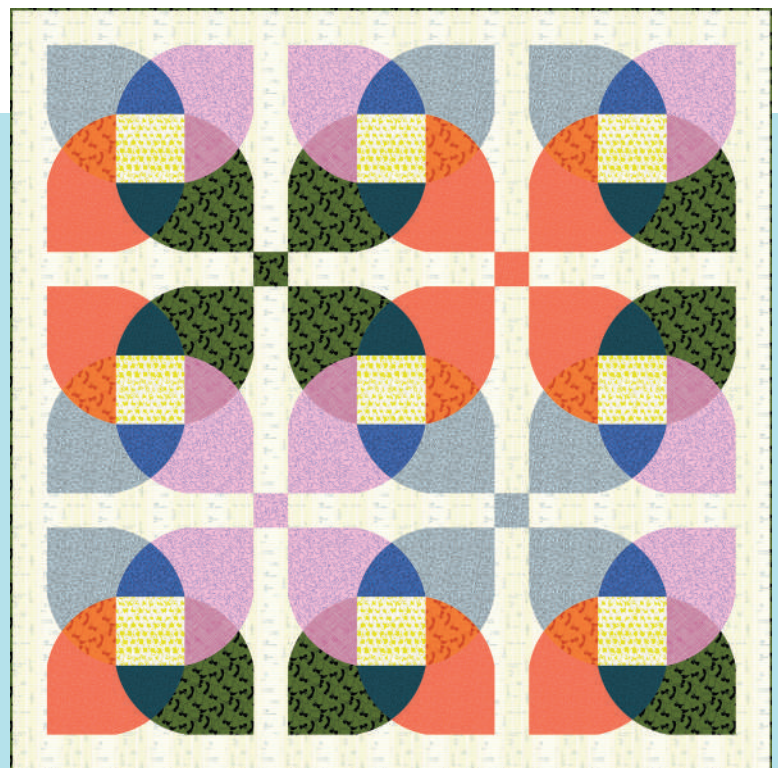
Sarah Ruiz  
Quarter Moon

**48" x 64"**

LC  
FRIENDLY!



**CKQ 2410** Copper Kettle Quilts | Waveforms **63½" x 76½"**



**ES 512 RFL** Everyday Stitches | Reflections

**88" x 88"**