



ALEXIA MARCELLE ABEGG

In Moonglow, Alexia was inspired by the full moon shining on her garden at night. She wanted a range of soft and shaded earthy colors for this group, colors that would feel calming and inspiring but also rich in pigment. Moonglow is designed to coordinate with Alexia's Warp & Weft Moonglow woven collection, seen on pages 16-19. All prints shown at 25% scale.

MARCH 2023 DELIVERY

26 premium 100% Ruby Star Cotton prints

ASSORTMENTS & PRECUTS

ASSTRS4030

15

10

RS4030

FQ

JR

LC

PP

MC

SUGGESTED ADD IT UP COORDINATES & COMPLEMENTS

RS4005

12M

20

46

17

37

27

SUGGESTED SPECKLED COORDINATES & COMPLEMENTS

RS5027

64M

26M

63M

32

67M

16M

105M

SUGGESTED MODA BELLA SOLID COORDINATES & COMPLEMENTS

9900

124

292

328

224

48

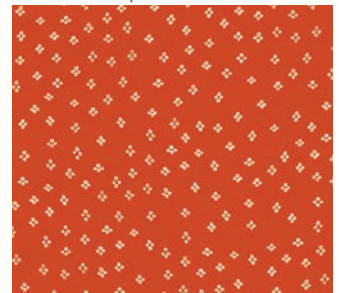
20

ADD IT UP | PLUM



RS4005 72

HANDKERCHIEF | CAYENNE



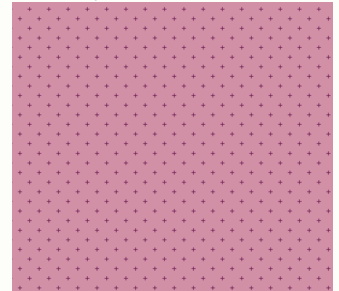
RS4030 25

PHASES | LAVENDER



RS4080 14

ADD IT UP | DEEP LAVENDER



RS4005 69

GARDEN SKETCHES | LUPINE



RS4078 13

MOONRISE DREAM | CARAMEL



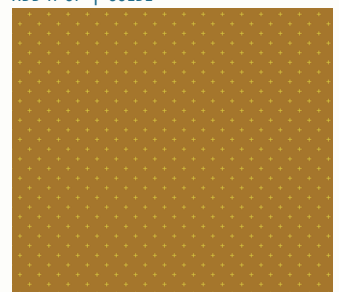
RS4077 11

BASKET | CACTUS



RS4082 11

ADD IT UP | SUEDE



RS4005 68

HEIRLOOM STAR | CAYENNE



RS4081 13

MOONRISE DREAM | LAVENDER



RS4077 12

HANDKERCHIEF | LAVENDER



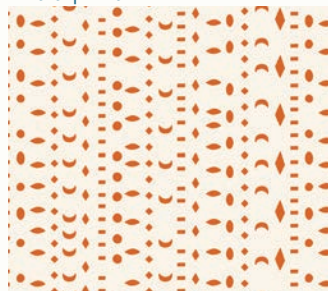
RS4030 26

ADD IT UP | CARAMEL



RS4005 67

PHASES | NATURAL



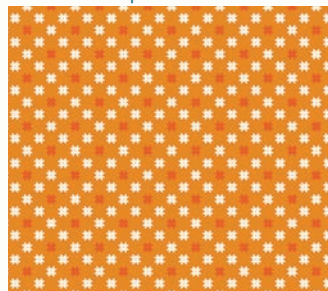
RS4080 11

MOONGLOW | EARTH



RS4079 13

HEIRLOOM STAR | CARAMEL



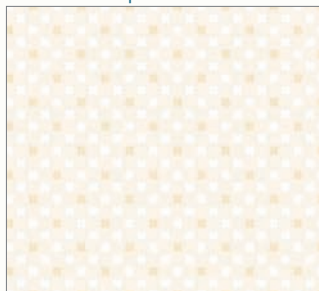
RS4081 12

GARDEN SKETCHES | NATURAL



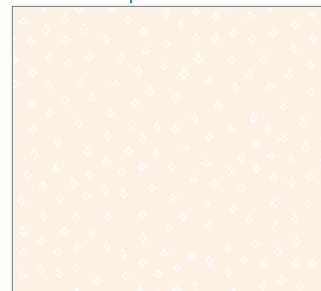
RS4078 11

HEIRLOOM STAR | NATURAL



RS4081 11

HANDKERCHIEF | NATURAL



RS4030 21

HANDKERCHIEF | EARTH



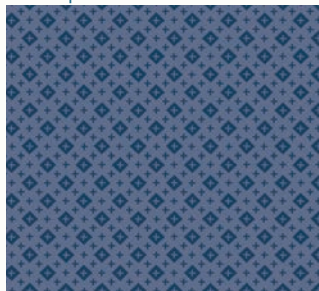
RS4030 23

MOONGLOW | NATURAL



RS4079 11

BASKET | PERIWINKLE



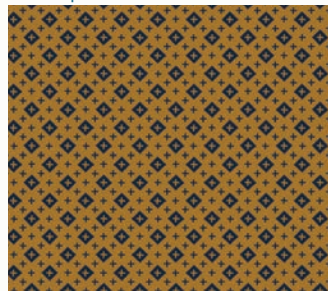
RS4082 18

MOONGLOW | PERIWINKLE



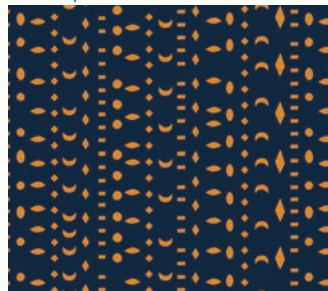
RS4079 15

BASKET | SUEDE



RS4082 15

PHASES | INDIGO



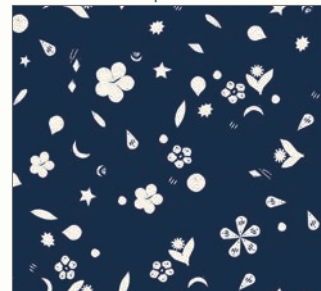
RS4080 15

MOONRISE DREAM | INDIGO



RS4077 13

GARDEN SKETCHES | INDIGO



RS4078 15