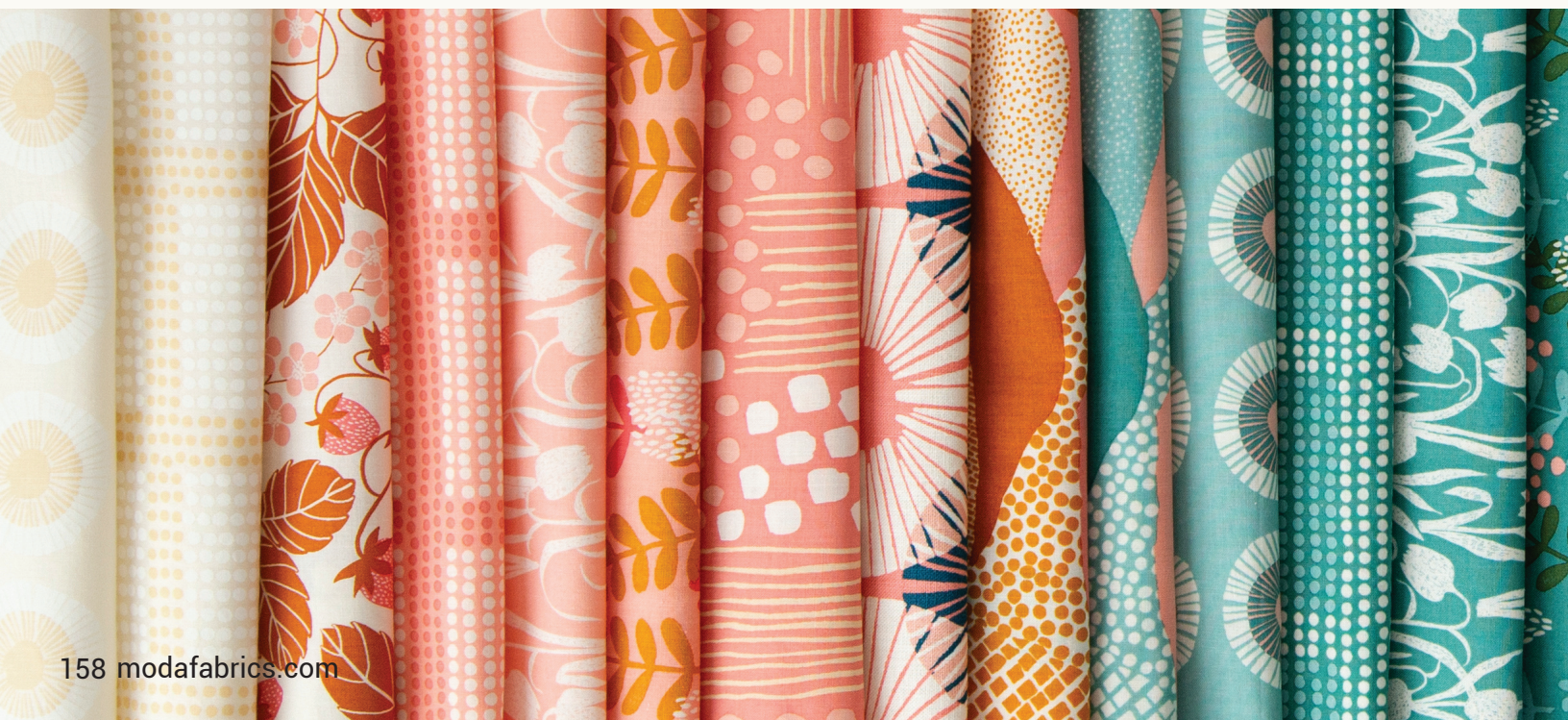


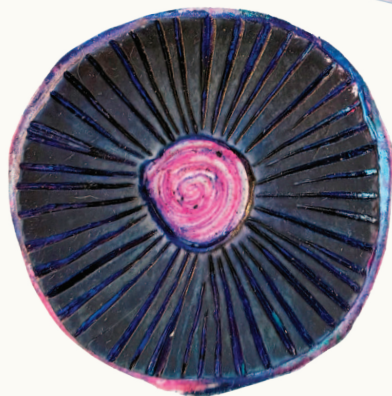
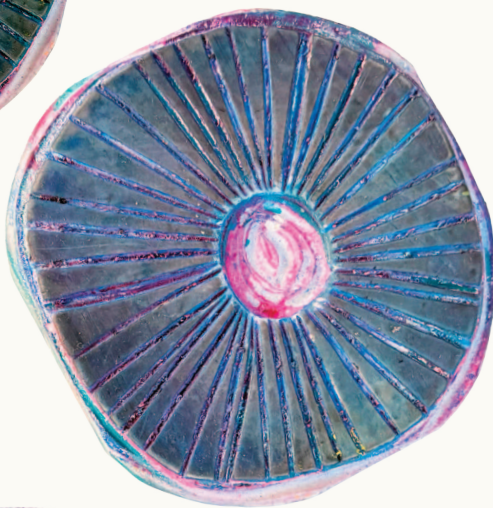
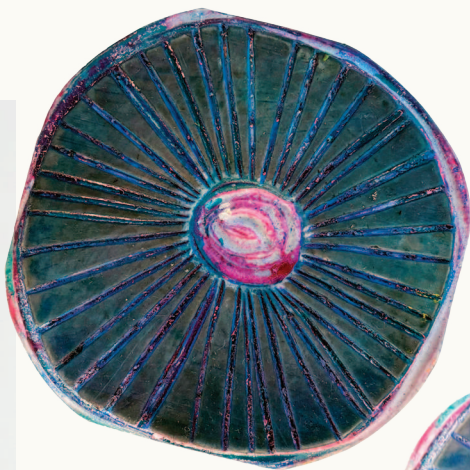
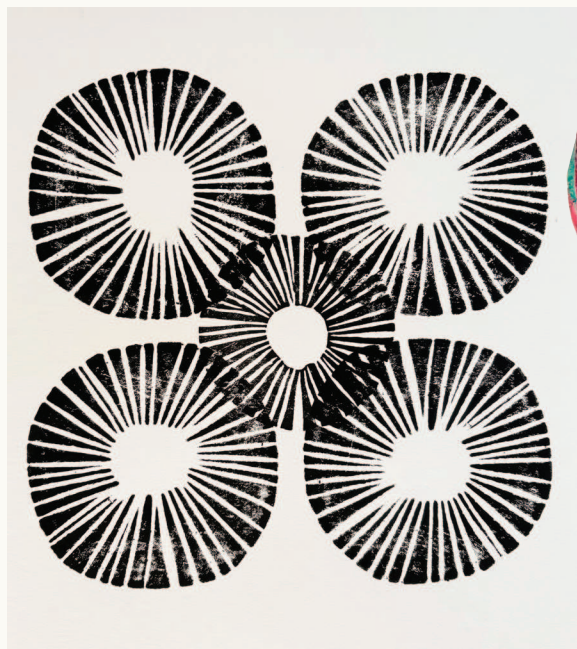


Reimagined Landscapes

by JEN HEWETT

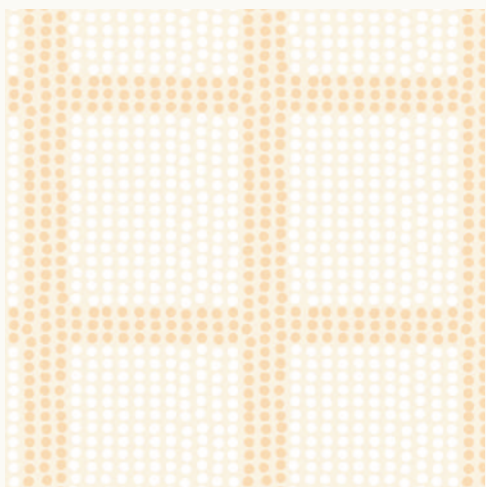
Reimagined Landscapes is an update to my first fabric collection, Imagined Landscapes. I designed that collection in 2017, when I still lived in San Francisco. Many of the prints are based on personal landmarks and scenes from my regular walks and bike rides around the city. I moved to the Hudson Valley in 2021, after 25 years in San Francisco. I've updated the palette of this collection to reflect the very distinct seasons of my new home.



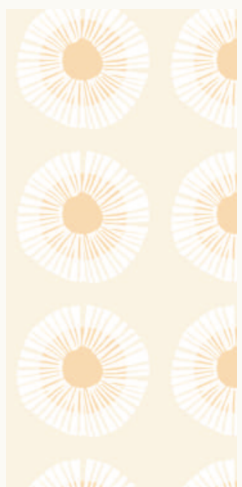


I'm a printmaker by training, and many of my earliest fabric designs are based on my block printed and screenprinted work. Both my Seaside Daisy and Superbloom prints use the same, central motif – starburst patterns that I carved into blocks for block printing. The design is based on the flowers of the seaside daisy plant, which is native to coastal California. Seaside daisy grows wild on the cliffs and bluffs where I regularly rode my bike for 25 years.





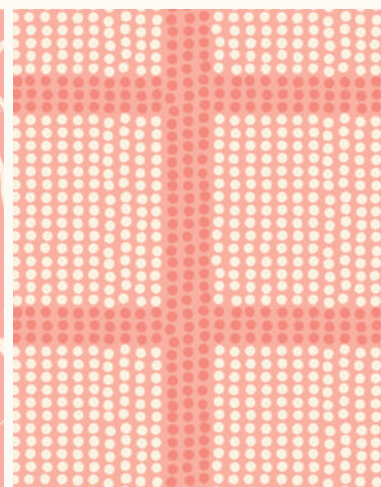
RS6055 11
THE AVENUES | NATURAL



RS6050 11
SEASIDE DAISY | NATURAL



RS6052 11
FRITILLARIA | BASHFUL



RS6055 12
THE AVENUES | BASHFUL



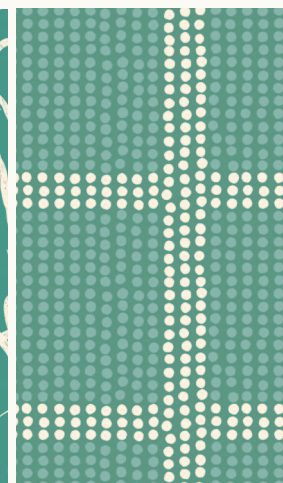
RS6053 14
LANDS END | WATER



RS6050 12
SEASIDE DAISY | WATER



RS6052 14
FRITILLARIA | WATERCRESS



RS6055 14
THE AVENUES | WATERCRESS



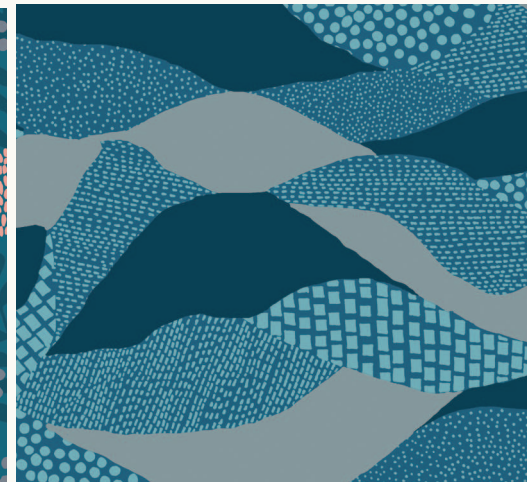
RS6056 19L
SUPERBLOOM CANVAS | TEAL



RS6049 15
AERIAL VIEW | TEAL



RS6051 15
FERN DELL | TEAL



RS6053 16
LANDS END | TEAL



NOVEMBER 2025 DELIVERY

22 premium 100% Ruby Star Cotton prints
3 Cotton/Linen Canvas Prints (70% cotton, 30% linen)

ASSORTMENTS & PRECUTS

ASSTRS6049

15

10

RS6049

FQ

JR

LC

MC

PP

ALL PRINTS SHOWN AT 30% SCALE

COORDINATES & COMPLEMENTS



RS6049 12
AERIAL VIEW | WATERMELON



RS6051 12
FERN DELL | BASHFUL



RS6053 12
LANDS END | SADDLE



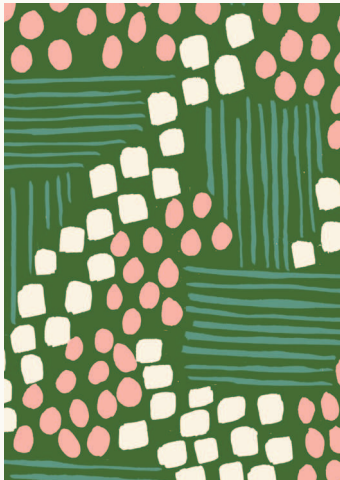
RS6054 11
STRAWBERRY FIELD | BASHFUL



RS6056 15L
SUPERBLOOM CANVAS | WATERMELON



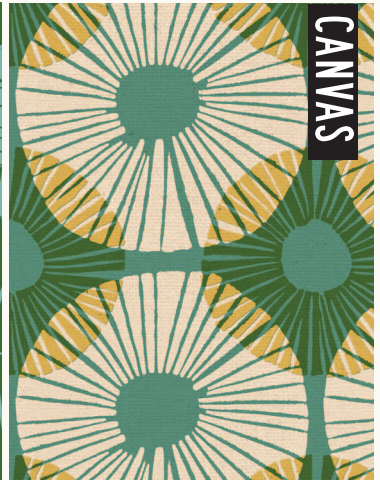
RS6051 13
FERN DELL | WATERCRESS



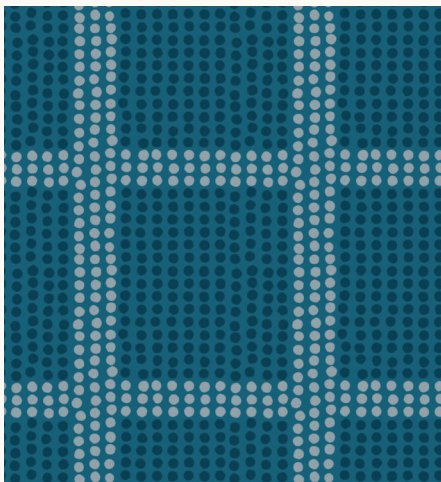
RS6049 14
AERIAL VIEW | ENDPAPER GREEN



RS6054 15
STRAWBERRY FIELD | ENDPAPER GREEN



RS6056 17L
SUPERBLOOM CANVAS | WATERCRESS



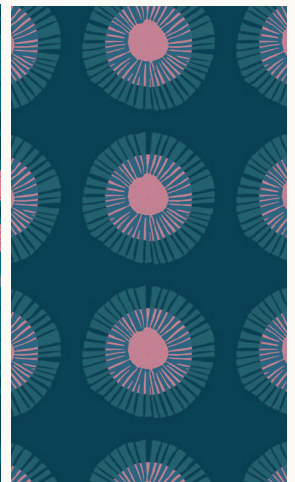
RS6055 16
THE AVENUES | GALAXY



RS6052 16
FRITILLARIA | GALAXY



RS6054 16
STRAWBERRY FIELD | GALAXY



RS6050 14
SEASIDE DAISY | GALAXY



COTTON CANDY PINK RS5027 37M



STRAWBERRY RS5027 43M



SADDLE RS4109 51



SOFT BLUE RS5027 48M



WINE TIME RS5027 36M



CKQ 2415 Copper Kettle Quilts | Star Stacked

72½" x 72½"



SMQ 107
59" x 69"

Sew Simply Meg
Apis



HCD 003
66" x 66"

Holly Clarke Design
Ironwood Point Quilt



SIP 107
52½" x 60½"

Stitched in Purple
The Cliffs



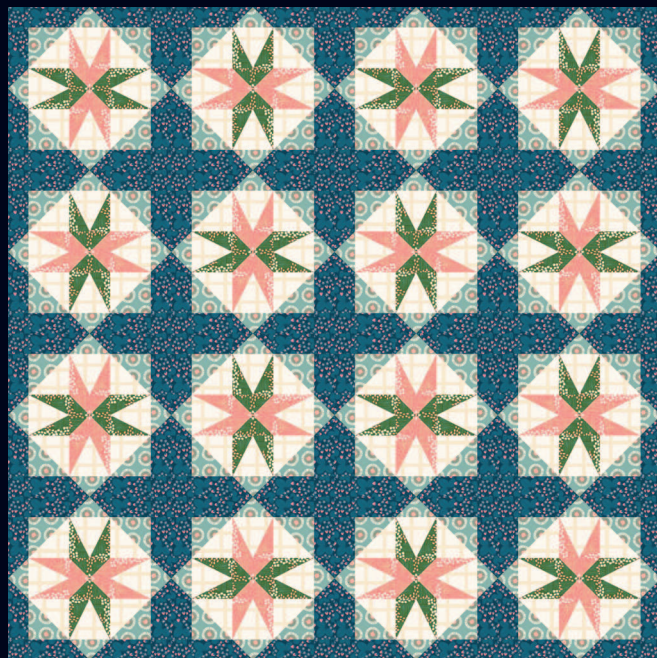
HCD 017
64" x 64"

Holly Clarke Design
Dot Matrix Quilt



KTQ 188 Kitchen Table Quilting | The Sybil Quilt

64" x 76"



SS 04 String and Story | Star Island

64½" x 64½"



HCD 009 Holly Clarke Designs | Dresden Swirl

62" x 62"

