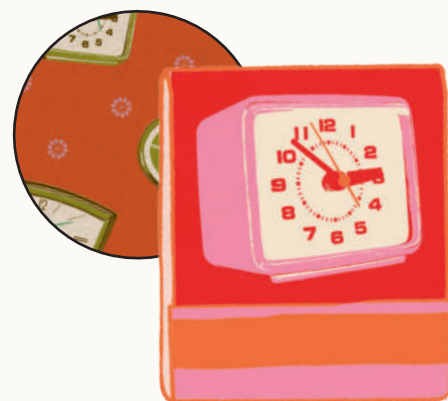




This is the ten year anniversary of Melody's 2016 collection, Trinket. Once again, she has brought a series of trinkets and small objects to fabric, including two prints from the original collection. For Trinketry, Melody drew a series of 78 match boxes and match books (an idea she's had for years!) that reference drawings and artwork from throughout her career.

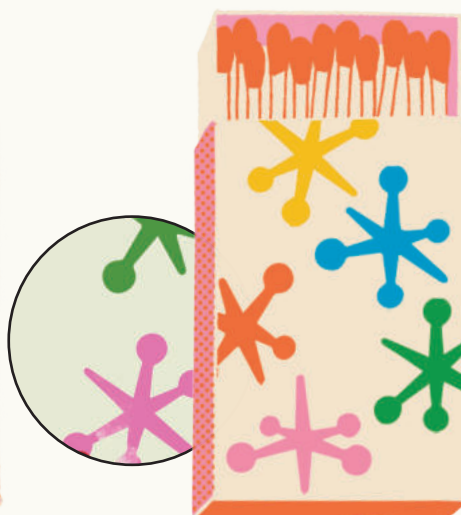
Here are a few examples:



RUBY STAR RISING
KOKKA | 2011



RUBY STAR POLKA DOT
KOKKA | 2013



PLAYFUL
COTTON + STEEL | 2014



PICNIC
COTTON + STEEL | 2015



SOCIAL
RUBY STAR SOCIETY | 2019



REVERIE
RUBY STAR SOCIETY | 2022



FLOWERLAND
RUBY STAR SOCIETY | 2023



Trinketry includes a new selection of hearts, including two neon pink options!

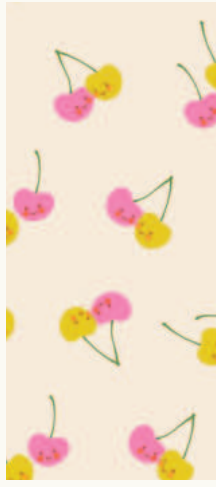


The Pens and Spools, both featured in the 2016 Trinket collection, are brought back in fresh new colors and designs





RS0091 22*
HEARTS | NEON PINK



RS0112 11
CHERRY FRIENDS | NATURAL



RS0110 11*
PENS | NATURAL



RS0109 11
MATCHMAKER | NATURAL WITH NEON



RS0114 17
TRINKETRY FLORAL | FLAMINGO



RS0113 15*
LIT | FLAMINGO



RS0111 13*
SPOOLS | GOLDFISH



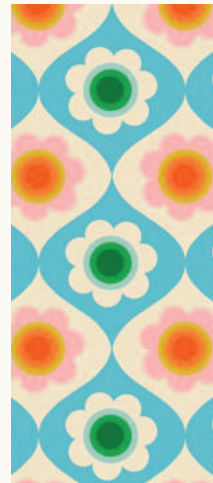
RS0113 16*
LIT | GOLDFISH



RS0091 28
HEARTS | GOLDFISH



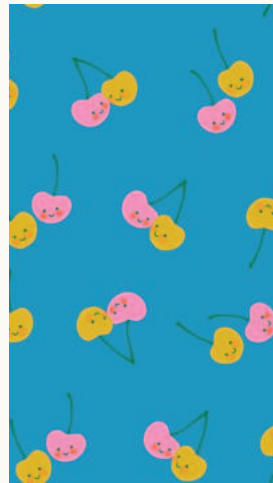
RS0111 18*
SPOOLS | TURQUOISE



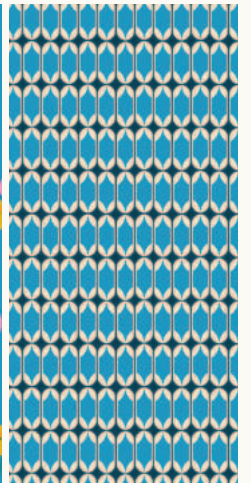
RS0114 18*
TRINKETRY FLORAL | TURQUOISE



RS0109 18*
MATCHMAKER | TURQUOISE



RS0112 14*
CHERRY FRIENDS | BRIGHT BLUE



RS0115 16*
MATCHBOOK | BRIGHT BLUE



FEBRUARY 2025 DELIVERY

28 premium 100% Ruby Star Cotton prints

ASSORTMENTS & PRECUTS

Select assortment available ASSTRS5170-10H
(10 yds of 20 skus with *)

ASSTRS0109

15

10

10H

RS0109

FQ

JR

LC

MC

PP

ALL PRINTS SHOWN AT 30% SCALE

COORDINATES & COMPLEMENTS



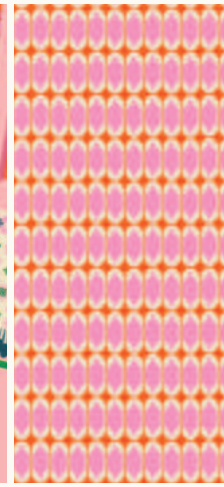
RS0111 17
SPOOLS | FLAMINGO



RS0110 18*
PENS | BALMY



RS0109 13*
MATCHMAKER | BALMY



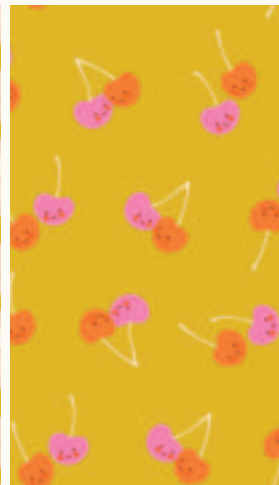
RS0115 12*
MATCHBOOK | FLAMINGO



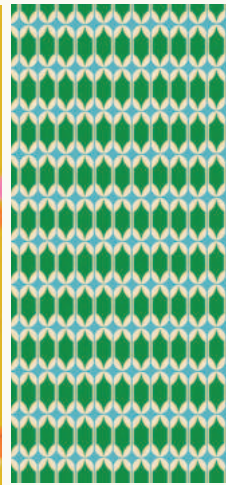
RS0091 27*
HEARTS | FLAMINGO



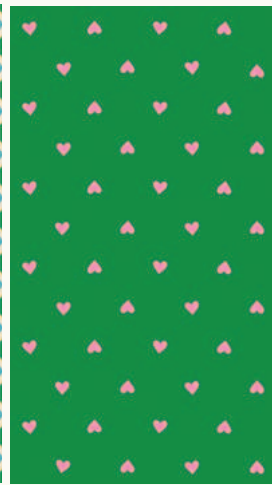
RS0114 14*
TRINKETRY FLORAL | GOLDENROD



RS0112 12*
CHERRY FRIENDS | GOLDENROD



RS0115 17
MATCHBOOK | DEEP VERDANT



RS0091 34*
HEARTS | DEEP VERDANT AND NEON



RS0112 15*
CHERRY FRIENDS | DEEP VERDANT



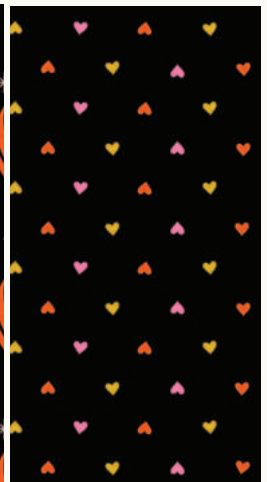
RS0110 20
PENS | GALAXY



RS0109 21*
MATCHMAKER | BLACK



RS0113 17
LIT | BLACK



RS0091 36*
HEARTS | BLACK



CREME BRULEE RS5027 136



GOLDEN HOUR RS5027 111M



FLAMINGO RS5027 123



VERDANT RS5027 114



BRIGHT BLUE RS5027 50M



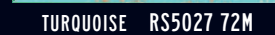
COTTON CANDY PINK RS5027 37M



GOLDENROD RS5027 112



GOLDFISH RS5027 120

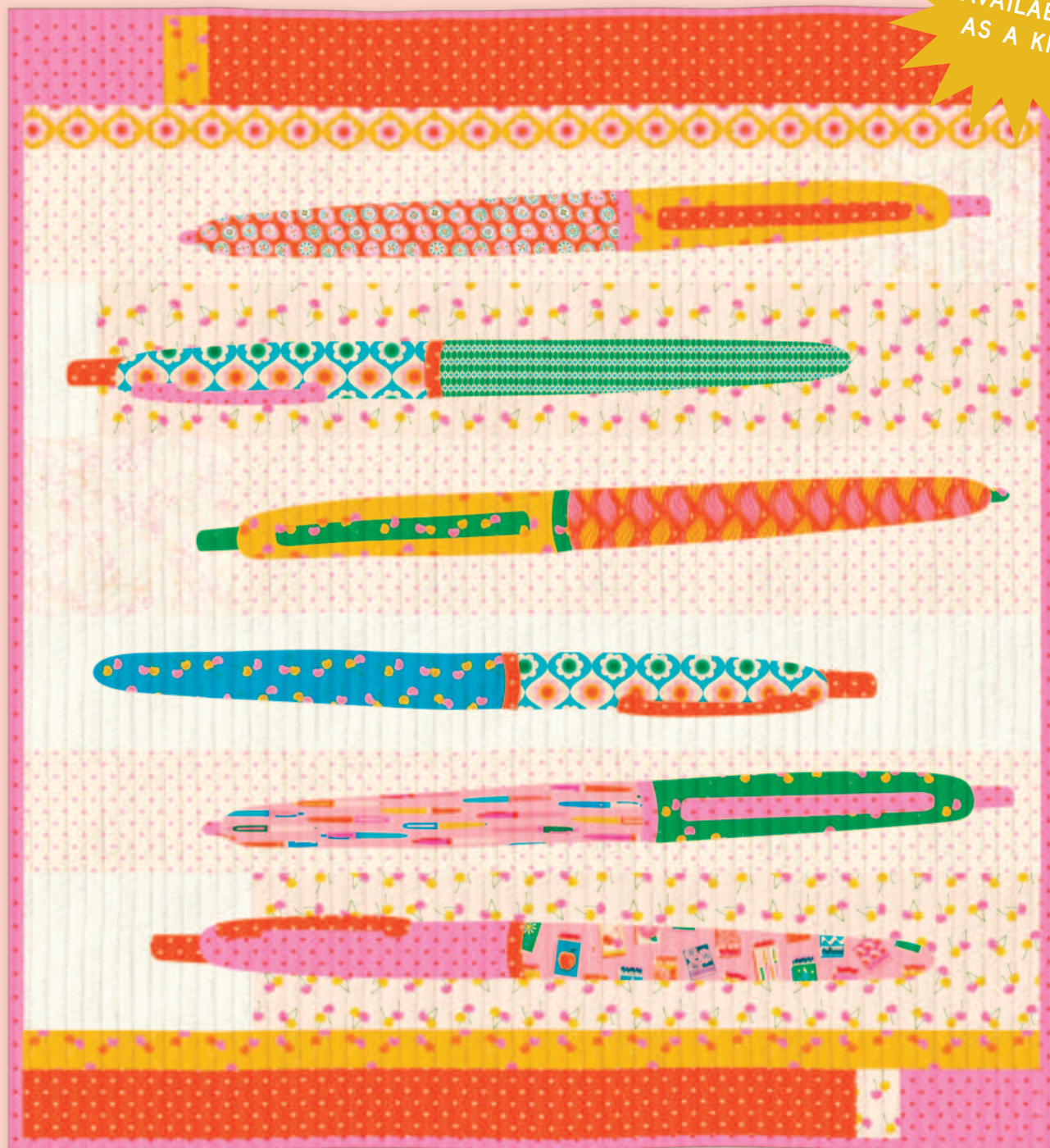


TURQUOISE RS5027 72M



TEAL RS5027 53M

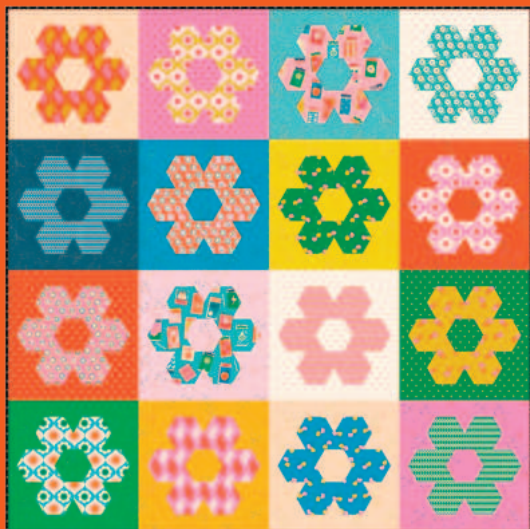
AVAILABLE
AS A KIT!



RS5170 KIT Ruby Star Society | Trinket Quilt

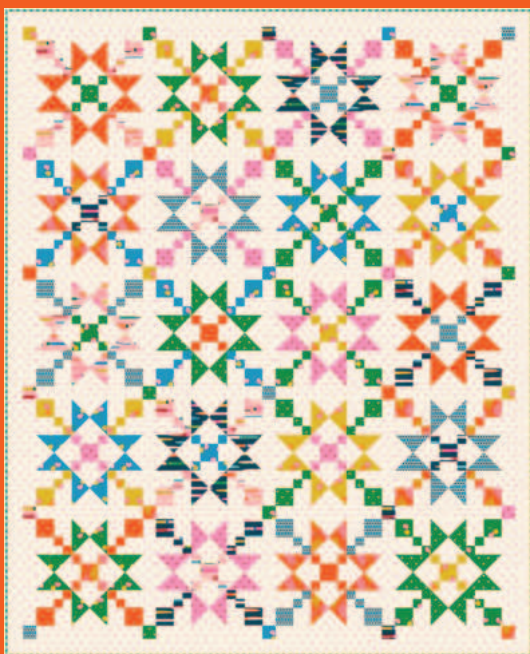
58½" x 65"

This applique quilt first debuted alongside Melody Miller's collection titled Trinket in 2016. We figured, what good timing to re-release the quilt with the follow up collection! This pattern will be available as a kit and a free pattern that will be uploaded to the Moda website when the fabric ships!



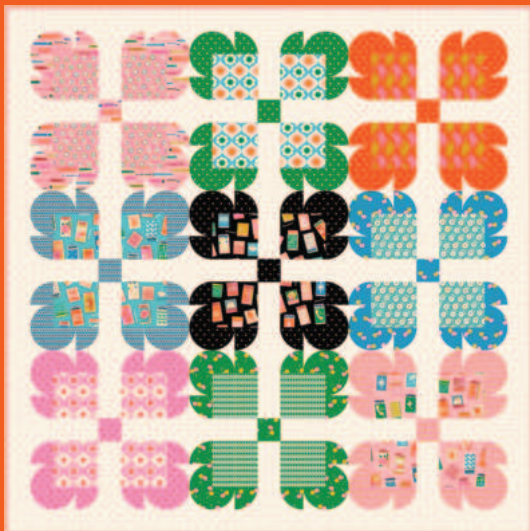
SMA 126
64" x 64"

Sew Mariana
Pop Garden



MMD 1046
60" x 73½"

Meadow Mist Designs
Scenic Waypoint



HCD 019
70" x 70"

Holly Clarke Designs
Teddy Bear Paw Quilt

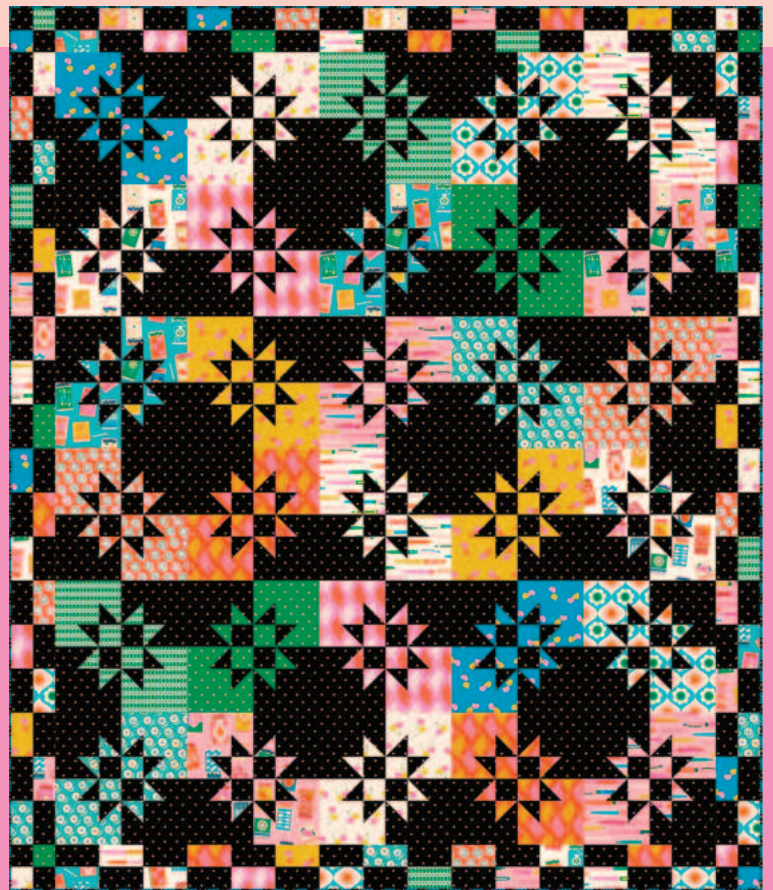


TRUNKETRY ©M



CQ 018 Crinkly Quilts | Little Holland Quilt

60" x 60"



CKQ 2421 Copper Kettle Quilt Co | Split Star

68½" x 80½"

layer cake friendly!



ES 407 IRO
Everyday Stitches
Irony
40" x 48"



HCD 017 Holly Clarke Designs | Dot Matrix Quilts 64" x 64"



KTQ 190 Kitchen Table Quilting | The Vivian Quilt 63" x 74"