

sketchbook

ALEXIA MARCELLE ABEGG

For Sketchbook, Alexia hand painted textures, cut shapes from paper, and pulled bits & pieces from her personal sketchbooks. She wanted the abstract prints to be thematically open minded so the sewer could create their own stories. The color palette is edited down but warm, inviting and fresh.

SEPTEMBER 2022 DELIVERY

26 premium 100% Ruby Star Cotton prints

ASSORTMENTS & PRECUTS

ASSTRS4070



RS4070



SUGGESTED ADD IT UP COORDINATES & COMPLEMENTS

RS5027



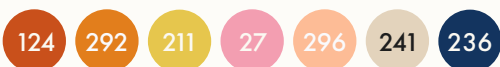
SUGGESTED SPECKLED COORDINATES & COMPLEMENTS

RS5027



SUGGESTED MODA BELLA SOLID COORDINATES & COMPLEMENTS

9900



BRUSHSTROKES | NATURAL



RS4070 11

BRUSHSTROKES | DUSK



RS4070 12

BRUSHSTROKES | KISS



RS4070 21

PAINT | ORCHID



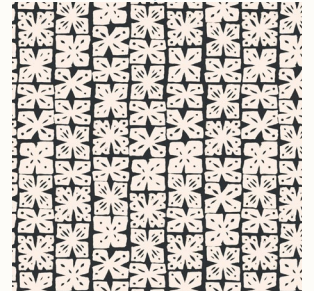
RS4071 12

STAMPED FLOWERS | DOVE



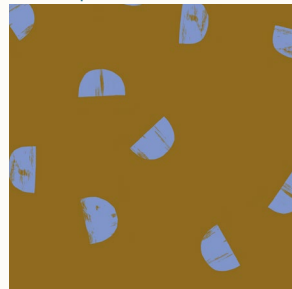
RS4073 11

STAMPED FLOWERS | WOLF



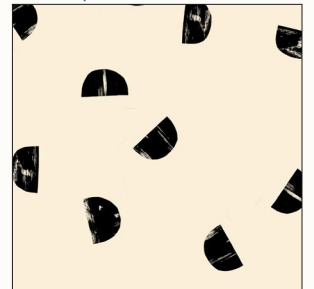
RS4073 15

CUTOUTS | SUEDE



RS4075 19

CUTOUTS | BLACK



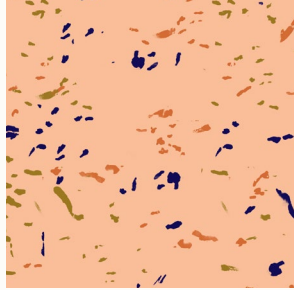
RS4075 20

BRUSHSTROKES | COPPER GREIGE



RS4070 13M

BRUSHSTROKES | DAHLIA



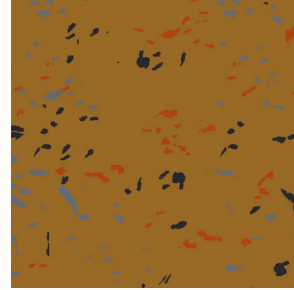
RS4070 15

BRUSHSTROKES | EARTH



RS4070 17

BRUSHSTROKES | SUEDE



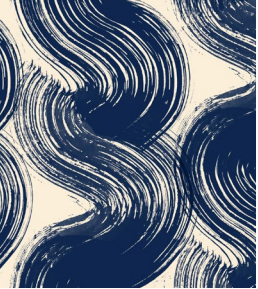
RS4070 18

BRUSHSTROKES | SUNLIGHT



RS4070 19

PAINT | NAVY



RS4071 14

PAINT | BLACK



RS4071 15

COLLAGE STRIPES | CAYENNE



RS4072 13

COLLAGE STRIPES | SUNLIGHT



RS4072 15

COLLAGE STRIPES | NAVY



RS4072 17

TRIMMED FLOWERS | NATURAL



RS4073 17

SCRAPS | DROPCLOTH



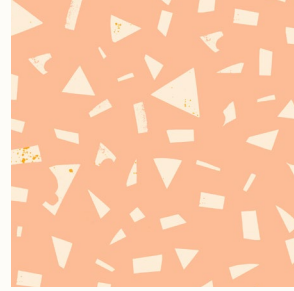
RS4074 11

SCRAPS | SUNLIGHT



RS4074 12

SCRAPS | DAHLIA



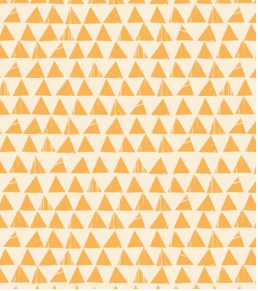
RS4074 14

CUTOUTS | CACTUS



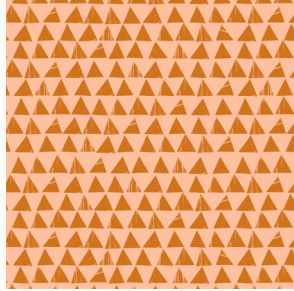
RS4075 17

TRIANGLES | CANTALOUPE



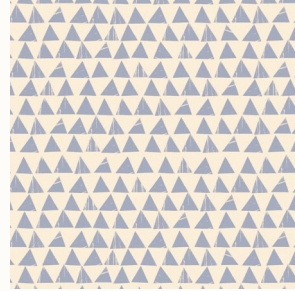
RS4076 11

TRIANGLES | EARTH



RS4076 12

TRIANGLES | DUSK



RS4076 14

