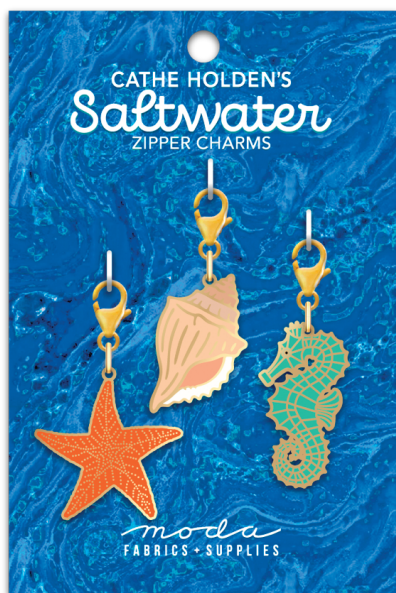


Saltwater

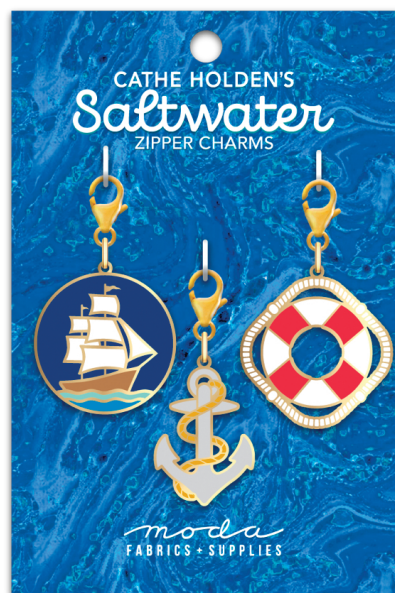
BY CATHE HOLDEN

Good luck t'ye where're ye be, at home, abroad or on the sea.

Set sail with the Saltwater collection by Cathe Holden—an inspiring array of seafaring prints perfect for coastal quilts, summer apparel, beach bags, and home décor. The maritime motifs include anchors, sailboats, seashells, starfish and coral, vintage nautical ephemera and graphics, sandy beach and ocean-water blender prints, and a Cathe Holden signature collage panel with coordinating fish-scale design. Pairing perfectly with an oceanic palette of Moda Grunge prints, this collection captures the spirit of the sea with nostalgic charm awaiting your next summer project.



CH204 Saltwater Charms Mul 3



CH205 Saltwater Charms Mul 3

moda MARCH DELIVERY



Saltwater BY CATHE HOLDEN



Reduced to show full WOF



Reduced to show full WOF

moda **MARCH DELIVERY**

Saltwater BY CATHE HOLDEN



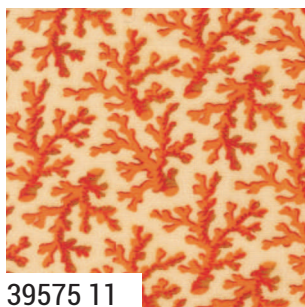
39570 11



39572 11



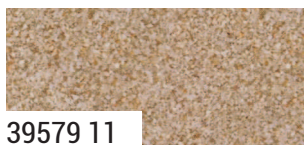
39574 11



39575 11



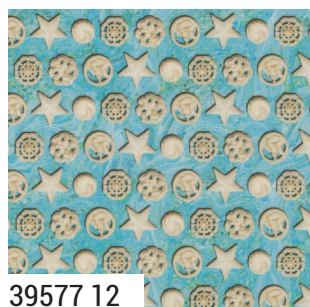
39577 11



39579 11



39576 11



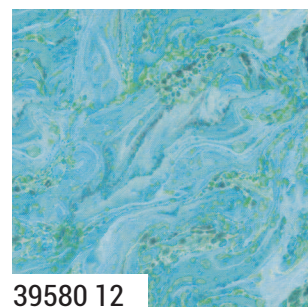
39577 12



39576 12



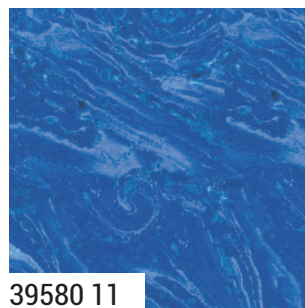
39578 11



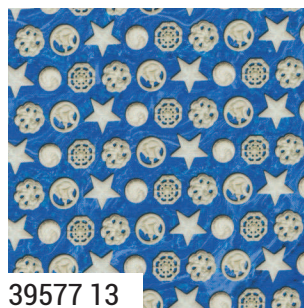
39580 12



39576 13



39580 11



39577 13



39573 13

39570

Asst.
15

Asst.
10

Low Cal
10

GAsst.
15

AB

JR

LC

MC

PP

MARCH DELIVERY

•17 Prints •100% Premium Cotton

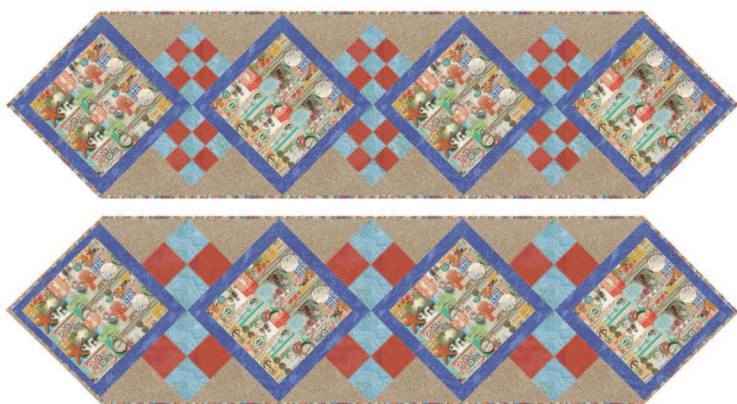
AB includes all 17 skus - cut 39581-11 - 18 - 18" x 44". JRs, LCs, MCs & PPs include 3 each of 39570 - 39573, 39575, 39579 & 39580 and two each of 39574 & 39576 - 39578. JRs, LCs, MCs & PPs do not include 39581. G assortment includes 15 yds of each coordinating Grunge.

Saltwater

BY CATHE HOLDEN



PBA 310 Two Big Totes 13" x 16" x 6"
by Patterns by Annie



AQD 124 Center Stage 15" x 56"
by Antler Quilt Designs

Saltwater BY CATHE HOLDEN



AQD 0266 Crown & Anchor 60" x 75"
by Antler Quilt Designs