



Warp & Weft Heirloom came to be when Alexia Marcelle Abegg set out to create a follow up collection to her very popular first yarn-dyed woven group, Warp & Weft. Warp & Weft Heirloom complements and expands upon her original color palette and adds to her library of woven textures. While creating this group, Alexia thought of traveling to the beach - vintage striped towels, breezy coverups, even woven beach chairs - and that feeling you get when you can't quite see the ocean yet but you know you're close. Alexia brought back her heavier Chore Coat cotton in a variety of new patterns - Linework Heavyweight, Chore Coat Stripe, and Woven Texture Stripe are all the same thick but drapey, slubby soft cotton fabric as Chore Coat from Warp & Weft. The rest of the fabrics in this group are lighter shirting weight, gorgeous as garments, quilts, and home dec projects.

APRIL 2021 DELIVERY

19 yarn-dyed woven cottons

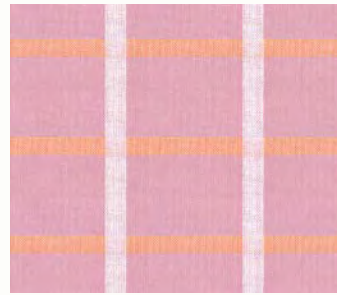
RS4014

Asst.
12

HY

FQ

SOLAR | LAVENDER



RS4014-11

SOLAR | SADDLE



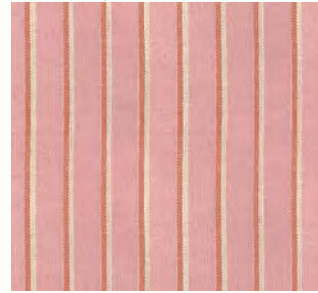
RS4014-12

SHIRTAWAIST | NAVY



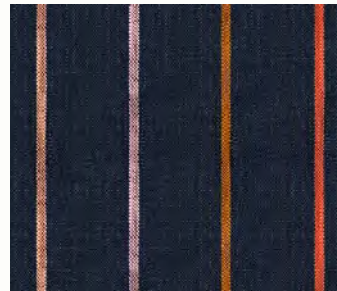
RS4034-11

SHIRTAWAIST | LAVENDER



RS4034-12

CHORE COAT STRIPE | NAVY



RS4036-12

WOVEN TEXTURE STRIPE | PERSIMMON



RS4037-11

LINWORK LIGHTWEIGHT | NAVY



RS4038-13

SOLAR | NAVY



RS4014-13

DRESS UP | SKY



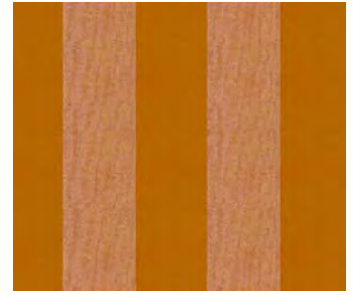
RS4033-11

DRESS UP | NAVY



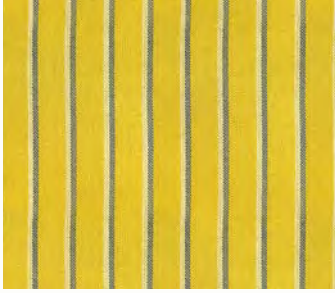
RS4033-12

DRESS UP | EARTH



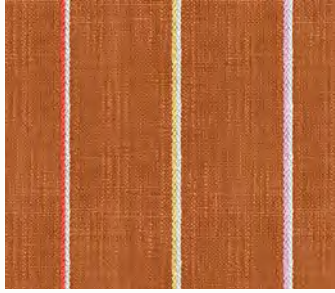
RS4033-13

SHIRTAIST | GOLDENROD



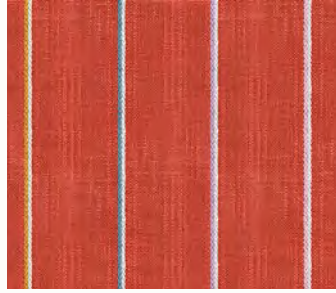
RS4034-13

LINWORK HEAVYWEIGHT | SADDLE



RS4035-11

LINWORK HEAVYWEIGHT | PERSIMMON



RS4035-12

CHORE COAT STRIPE | SUNSET



RS4036-11

WOVEN TEXTURE STRIPE | BLUEBELL



RS4037-12

WOVEN TEXTURE STRIPE | LUPINE



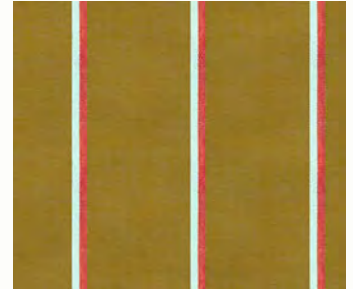
RS4037-13

LINWORK LIGHTWEIGHT | BLUE SLATE



RS4038-11

LINWORK LIGHTWEIGHT | SUEDE



RS4038-12

**SUGGESTED SPECKLED
COORDINATES & COMPLEMENTS**

RS5027

**SUGGESTED ADD IT UP
COORDINATES & COMPLEMENTS**

RS4005

**SUGGESTED MODA BELLA SOLID
COORDINATES & COMPLEMENTS**

9900