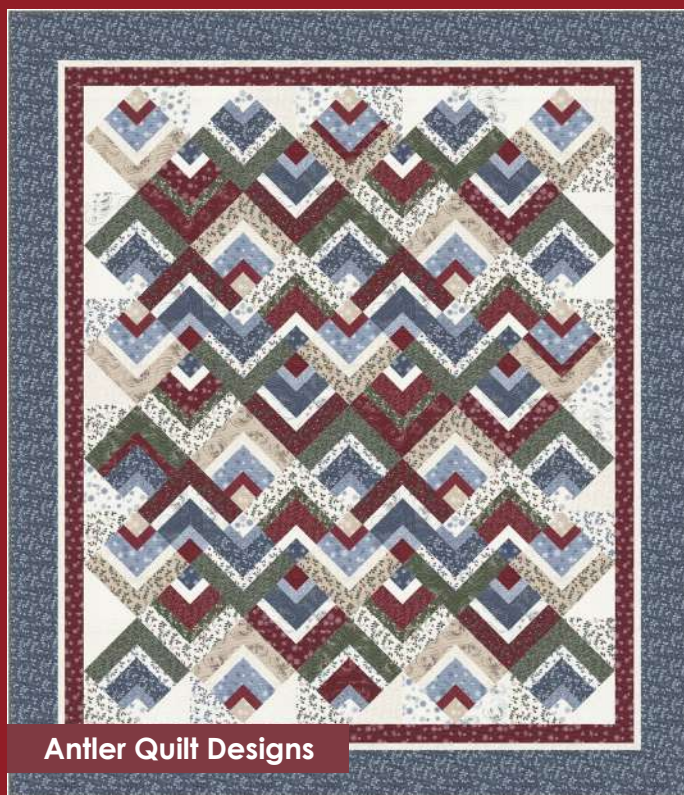


# Winter Flurries

## Holly Taylor

As winter begins to set in, and the air is brisk and cold, our world takes on a frosty look in shades of blue and gray. Even the light changes as the sky has a different cast from previous seasons. As the filtered sun hits the tips of branches, it turns the frost into a sparkling blue, and when the snow begins to swirl, the only other visible colors are the evergreens, and the red berries left on the bare branches of bushes. Thus, the inspiration for Winter Flurries.

*moda* FABRICS + SUPPLIES® **JULY DELIVERY**



Antler Quilt Designs

**AQR 0250** Black Tie Affair 72" x 83"



Antler Quilt Designs

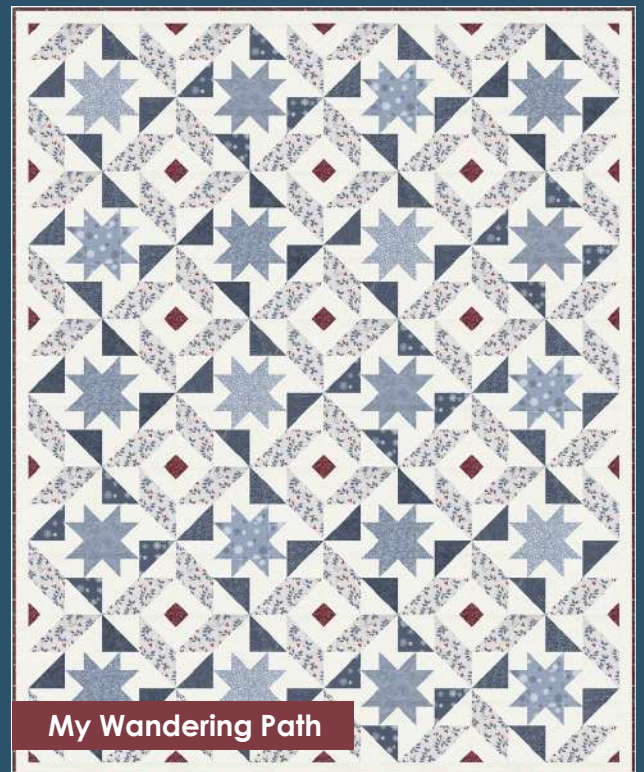
**AQR 0258** Kings Cross 62" x 82"





The Quilt Factory

QF 2120 Crimson Majesty 83" x 83"



My Wandering Path

MWP 221 Blizzard Stars 50" x 62"



# Winter Flurries Holly Taylor



6881 11\*



6882 21\*



6884 16\*



6884 11\*



6885 11\*



6538 256



6883 21



6881 18\*



6882 38



6884 18\*



6538 261



6885 15\*



6538 260



6881 15\*



6884 15\*



6881 14\*



6883 24



6538 259



6884 14\*



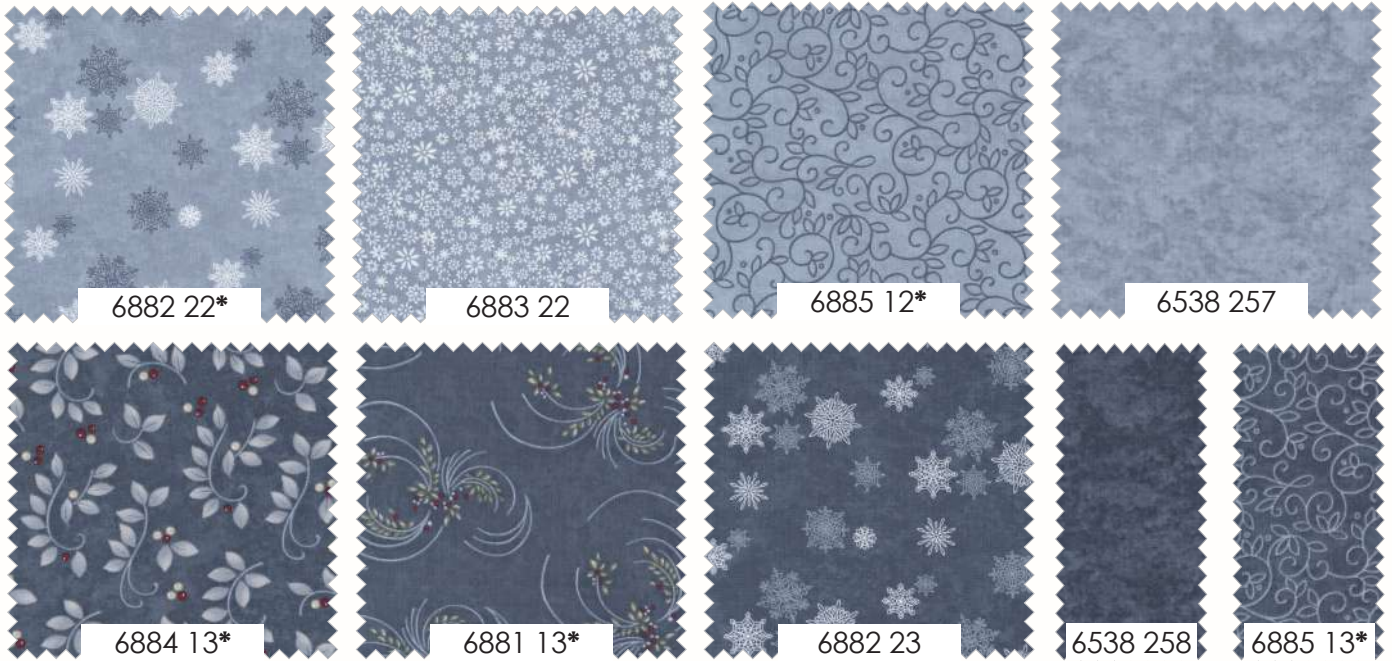
6882 34\*



6885 14\*



# Winter Flurries Holly Taylor



6880 13



6880 14\*

Panels measure 24" x 44". Frames are 5" x 7".

6880 **Asst. 15** **Asst. 10** **Low Cal 10** **AB** **F8** **JR** **LC** **MC** **PP** **JULY DELIVERY**

•32 Prints    •100% Premium Cotton  
 ABs include one panel - 6880-14. F8s, JRs, LCs, MCs & PPs do not include panels.  
 JRs, LCs, MCs & PPs include 30 skus plus two each of 6884, 6885-11, 13, 14 & 15.